

TM  
**lamalink.com**

your connection to the lama world

MAY 2008

Interview with  
Tammie  
Efraimson-Hiraga

Lamas Hate  
Plucking

Oregon Auction  
For Camelid  
Research

www.lamalink.com

**"Show Me — The Money"**

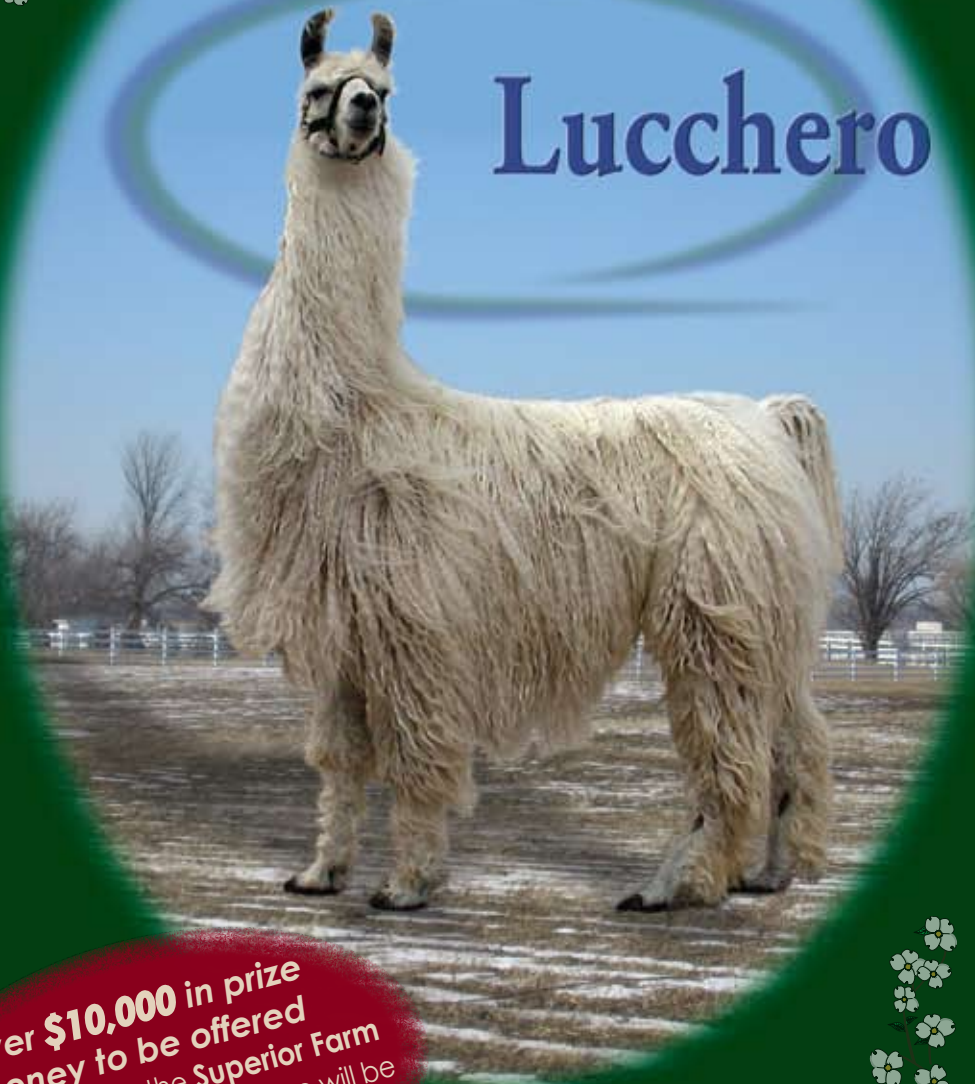
**Ozark Llama Classic Sale & Show**

**May 3 & 4, 2008**

**Missouri State Fairgrounds • Sedalia, Missouri**

**New Date  
& Location**

**Lucchero**



**Over \$10,000 in prize  
money to be offered**  
All proceeds from the Superior Farm  
donation of **Lucchero's** service will be  
awarded to the Best Male and  
Best Female in the show.

**Full Catalog Inside — Pages 15 - 34**

PLAN NOW TO ATTEND THE 2008  
**LFA WORLD CHAMPIONSHIP SHOW & SALE**  
SEPTEMBER 19-21, 2008 • CEDAR RAPIDS, IOWA



Consign your best today to the premiere sale and event of the year. Show the industry what best represents your ranch program!

**Consignment deadline is June 1, 2008**

Consignment forms and show applications are available on line [www.thelfa.org](http://www.thelfa.org)  
Join in the spirit of this industry event hosted by the membership.

**The Association by the People for the People**

## 2008 LFA EVENT SPONSORS

### DIAMOND SPONSORS...

**Ken & Celia Austin**  
Raindance Ranch  
Newberg, OR

**Mike & Wendy Gerken**  
Hard Rock Llama Company  
Ada, OH

**John & Debra McDougall**  
Westerham Farm & Studio  
Montpelier, VA

**Malcolm & Carol Ann Tallmon**  
CarolLlama Farms  
Weatherford, TX

**Keith & Patti Wattigney**  
P.K. Mini's  
Belle Chase, LA

### GOLD LEADERSHIP SPONSORS...

**Gordon & Pam Jensen**  
Hid - n - Hills Llamas  
Cochrane, WI

**Doug & Kamala Overman**  
Overman Llamas  
Otterbein, IN

### GRAND ENTREPRENEUR SPONSORS...

**Tom & Barb Parsons**  
Animal Acres Llamas  
Douseman, WI

**Dennis & Tracey McGinnis**  
Bear Korner Llamas  
Warrens, WI



Thank you to those who have already agreed to sponsor!  
Sponsorship opportunities are still available.  
Contact Phil Feiner at [philip@pfeiner.com](mailto:philip@pfeiner.com)

Request a catalog today at  
[www.thelfa.org](http://www.thelfa.org)

**BE PART OF THE FUN!**



# On The Cover

- 15 **Ozark Llama Classic Sale & Show**  
Missouri State Fairgrounds • Sedalia, Missouri

# Must Reads Features

- 11 **Lamas Hate Plucking**  
Part 1  
by Mary Pendergast
- 35 **Oregon Auction For Camelid Research**  
by Melinda Van Bossuyt
- 37 **Copper Nutrition In Camelids**  
Part 1  
by Robert J. Van Saun, DVM, MS, PhD
- 41 **Back To Basics**  
by Jennifer Franks & Megan Cyrus

41

A cute little hat will help to desensitize your cria.



- 35 **El Nino's Accoyo Lancelot**  
Top selling alpaca stud service

# Within Every Issue

- 8 **Linking-Up**  
Interview with Tammie Efraimson-Hiraga  
by Sue Wilde

---

## CANADIAN CONNECTION

- 14 **Confucius Say...**  
by Sue Wilde
- 41 **Kid's Korner**
- 43 **Where To Be**
- 45 **Hummin' & Thumbin'**
- 46 **Classified Advertising**

your connection to the lama world

**MAY 2008**

Volume 4, Issue 9

[www.lamalink.com](http://www.lamalink.com)

---

**EDITOR/PUBLISHER**

Monica Tocci-Brown  
[editor@lamalink.com](mailto:editor@lamalink.com)

---

**WEB DESIGN**

Beverly Storer

---

**GRAPHIC DESIGN**

Bonnie Bushman

---

**CONTRIBUTING WRITERS**

Meagan Cyrus, Jennifer Franks, Mary Pendergast, Melinda Van Bossuyt, Robert J. Van Saun, DVM, MS, PhD, Sue Wilde

---

**CONTRIBUTING ILLUSTRATOR**

Jacob Laraway

---

LamaLink.com is published by New Wave Publishing, LLC.

Reproduction of any portion of LamaLink.com magazine without written permission of the publisher is prohibited.

---

**SUBSCRIBERS:**

If the postal authorities alert us that your magazine is undeliverable, we have no further obligation unless we receive a corrected address within two years. POSTMASTER: Send address changes to LamaLink.com, 470 Riverside Road, Kalispell, MT 59901 or send via e-mail to [subscriptions@lamalink.com](mailto:subscriptions@lamalink.com).

---

**LETTERS TO THE EDITOR:**

Please include your name, address and phone number. Letters may be edited for clarity or space. Send mail to LamaLink.com, 470 Riverside Road, Kalispell, MT 59901. Or send e-mail to [editor@lamalink.com](mailto:editor@lamalink.com)

---

**CONTACT US:**

LamaLink.com  
470 Riverside Road • Kalispell, MT 59901  
406.755.5473  
[www.lamalink.com](http://www.lamalink.com)  
[editor@lamalink.com](mailto:editor@lamalink.com)  
[advertising@lamalink.com](mailto:advertising@lamalink.com) • [subscriptions@lamalink.com](mailto:subscriptions@lamalink.com)

The opinions, beliefs and viewpoints expressed by the various authors and forum participants in this magazine and on the web site do not necessarily reflect the opinions, beliefs and viewpoints of LamaLink.com or its advertisers.

---

## ADVERTISER INDEX

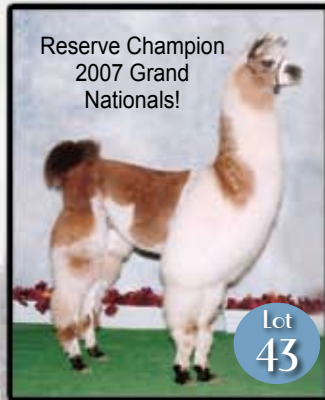
American Miniature Llama Assoc .....	pg 14	Earth Angels .....	pg 9	Ozark Llama Classic.....	cover, pgs15-34
Argentine Llamas Aficianados .....	pg 14	Erie County Fair, Llama Fiber Classic..	pg 10	Paco-Vicuñas .....	pg 11
Buckhollow Llamas.....	pg 35	FrequenSea.....	pg 38	Rare Breeds Journal.....	pg 36
Canadian Mystic Meadows.....	pg 12	Hinterland .....	pg 6&7	Roxywood Llamas .....	pg 35
Cascade Llama Sale .....	pg 5	Holy Tea.....	pg 37	Sapaveco Ranches .....	pg 11
Catawissa Llamas .....	pg 13	Life's Abundance .....	pg 40	Superior Farms Llamas .....	pg 48
Criven Llamas.....	pg 12	Llama Futurity Association.....	pg 2	Wilde Country Rancho.....	pg 47
Dreamweaver Creations Fiber Mill .....	pg 36	Moonshadow Farm Llamas .....	pg 36	Youth Jamboree .....	pg 37

Please tell our advertisers you saw them in LamaLink.com!

# Cascade Llama Sale

in the beautiful Columbia River Gorge, Stevenson Washington

May 3rd and 4th, 2008  
Featuring a Select  
Alpaca Sale



Reserve Champion  
2007 Grand  
Nationals!

Lot  
43

**JLL Andrew (M)**

JLL Alladdin's Luck X  
Desert Heart's Marlene D

Consigned by  
Halligan Ranch/Juniper Lane Llamas, LLC



Lot  
45

**Bitter Creek's String of Pearls (F)**

Silver Moon Jamali X  
Bitter Creek's Gray Dawn

Consigned by  
Bitter Creek Llamas, MT



Lot  
56

**Shirocco 2 (F)**

WSL Peruvian Y2K X CLT Hottie Tottie  
Consigned by  
Sunrise Ranch, AB, Canada



Lot  
17

**GNLC Bombshell (F)**

WSL Infared X Ripcurl's Maggie May  
Consigned by  
Great Northern Llama Co. MT



Lot  
61

**MRS Case Fire (M)**

PME Firefrost X MRS Rosasha  
Consigned by  
Medicine River Suris, AB, Canada



Lot  
14

**FPL Sweet Pickle (F)**

Abilene X Sweet Relish  
Consigned by  
SW Llama Company, AZ



Don't miss the FUN!



2007 event  
photos  
courtesy of  
Elizabeth Martin



FOR PHONE BIDDING OR FURTHER INFO:

Sale contact: Jacob Mumford  
(360) 901-1073 • [cascadellamasale@aol.com](mailto:cascadellamasale@aol.com)

[www.llamaalpacauction.com](http://www.llamaalpacauction.com)