

TM
lamalink.com

your connection to the lama world

MAY 2008

Interview with
Tammie
Efraimson-Hiraga

Lamas Hate
Plucking

Oregon Auction
For Camelid
Research

www.lamalink.com

"Show Me — The Money"
Ozark Llama Classic Sale & Show
May 3 & 4, 2008
Missouri State Fairgrounds • Sedalia, Missouri

**New Date
& Location**



**Over \$10,000 in prize
money to be offered**
All proceeds from the Superior Farm
donation of **Lucchero's** service will be
awarded to the Best Male and
Best Female in the show.

Full Catalog Inside — Pages 15 - 34

PLAN NOW TO ATTEND THE 2008
LFA WORLD CHAMPIONSHIP SHOW & SALE
SEPTEMBER 19-21, 2008 • CEDAR RAPIDS, IOWA



Consign your best today to the premiere sale and event of the year. Show the industry what best represents your ranch program!

Consignment deadline is June 1, 2008

Consignment forms and show applications are available on line www.thelfa.org
Join in the spirit of this industry event hosted by the membership.

The Association by the People for the People

2008 LFA EVENT SPONSORS

DIAMOND SPONSORS...

Ken & Celia Austin
Raindance Ranch
Newberg, OR

Mike & Wendy Gerken
Hard Rock Llama Company
Ada, OH

John & Debra McDougall
Westerham Farm & Studio
Montpelier, VA

Malcolm & Carol Ann Tallmon
CarolLlama Farms
Weatherford, TX

Keith & Patti Wattigney
P.K. Mini's
Belle Chase, LA

GOLD LEADERSHIP SPONSORS...

Gordon & Pam Jensen
Hid - n - Hills Llamas
Cochrane, WI

Doug & Kamala Overman
Overman Llamas
Otterbein, IN

GRAND ENTREPRENEUR SPONSORS...

Tom & Barb Parsons
Animal Acres Llamas
Douseman, WI

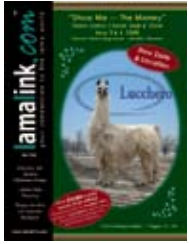
Dennis & Tracey McGinnis
Bear Korner Llamas
Warrens, WI



Thank you to those who have already agreed to sponsor!
Sponsorship opportunities are still available.
Contact Phil Feiner at philip@pfeiner.com

Request a catalog today at
www.thelfa.org

BE PART OF THE FUN!



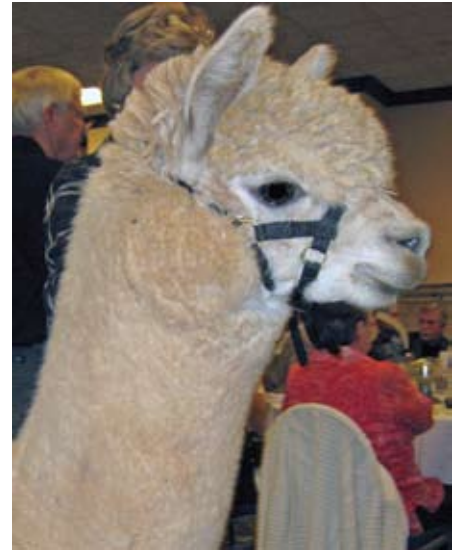
On The Cover

MAY 2008

- 15 **Ozark Llama Classic Sale & Show**
Missouri State Fairgrounds • Sedalia, Missouri

Must Reads Features

- 11 **Lamas Hate Plucking**
Part 1
by Mary Pendergast
- 35 **Oregon Auction For Camelid Research**
by Melinda Van Bossuyt
- 37 **Copper Nutrition In Camelids**
Part 1
by Robert J. Van Saun, DVM, MS, PhD
- 41 **Back To Basics**
by Jennifer Franks & Megan Cyrus



- 35 **El Nino's Accoyo Lancelot**
Top selling alpaca stud service

Within Every Issue

- 8 **Linking-Up**
Interview with
Tammie Efraimson-Hiraga
by Sue Wilde

CANADIAN CONNECTION

- 14 **Confucius Say...**
by Sue Wilde

- 41 **Kid's Korner**

- 43 **Where To Be**

- 45 **Hummin' & Thumbin'**

- 46 **Classified Advertising**

41

A cute little hat will help to desensitize your cria.



your connection to the lama world

MAY 2008

Volume 4, Issue 9

www.lamalink.com

EDITOR/PUBLISHER

Monica Tocci-Brown
editor@lamalink.com

WEB DESIGN

Beverly Storer

GRAPHIC DESIGN

Bonnie Bushman

CONTRIBUTING WRITERS

Meagan Cyrus, Jennifer Franks, Mary Pendergast, Melinda Van Bossuyt, Robert J. Van Saun, DVM, MS, PhD, Sue Wilde

CONTRIBUTING ILLUSTRATOR

Jacob Laraway

LamaLink.com is published by New Wave Publishing, LLC.

Reproduction of any portion of LamaLink.com magazine without written permission of the publisher is prohibited.

SUBSCRIBERS:

If the postal authorities alert us that your magazine is undeliverable, we have no further obligation unless we receive a corrected address within two years. POSTMASTER: Send address changes to LamaLink.com, 470 Riverside Road, Kalispell, MT 59901 or send via e-mail to subscriptions@lamalink.com.

LETTERS TO THE EDITOR:

Please include your name, address and phone number. Letters may be edited for clarity or space. Send mail to LamaLink.com, 470 Riverside Road, Kalispell, MT 59901. Or send e-mail to editor@lamalink.com

CONTACT US:

LamaLink.com
470 Riverside Road • Kalispell, MT 59901
406.755.5473
www.lamalink.com
editor@lamalink.com
advertising@lamalink.com • subscriptions@lamalink.com

The opinions, beliefs and viewpoints expressed by the various authors and forum participants in this magazine and on the web site do not necessarily reflect the opinions, beliefs and viewpoints of LamaLink.com or its advertisers.

ADVERTISER INDEX

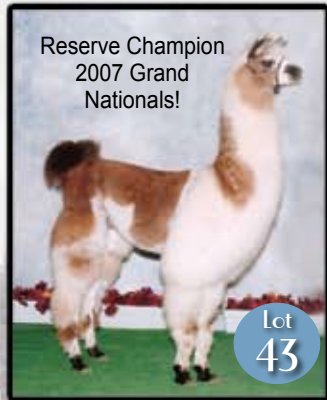
American Miniature Llama Assoc	pg 14	Earth Angels	pg 9	Ozark Llama Classic.....	cover, pgs15-34
Argentine Llamas Aficianados	pg 14	Erie County Fair, Llama Fiber Classic..	pg 10	Paco-Vicuñas	pg 11
Buckhollow Llamas.....	pg 35	FrequenSea.....	pg 38	Rare Breeds Journal.....	pg 36
Canadian Mystic Meadows.....	pg 12	Hinterland	pg 6&7	Roxywood Llamas	pg 35
Cascade Llama Sale	pg 5	Holy Tea.....	pg 37	Sapaveco Ranches	pg 11
Catawissa Llamas	pg 13	Life's Abundance	pg 40	Superior Farms Llamas	pg 48
Criven Llamas.....	pg 12	Llama Futurity Association.....	pg 2	Wilde Country Rancho.....	pg 47
Dreamweaver Creations Fiber Mill	pg 36	Moonshadow Farm Llamas	pg 36	Youth Jamboree	pg 37

Please tell our advertisers you saw them in LamaLink.com!

Cascade Llama Sale

in the beautiful Columbia River Gorge, Stevenson Washington

May 3rd and 4th, 2008
Featuring a Select
Alpaca Sale



Reserve Champion
2007 Grand
Nationals!

Lot
43

JLL Andrew (M)

JLL Alladdin's Luck X
Desert Heart's Marlene D
Consigned by

Halligan Ranch/Juniper Lane Llamas, LLC



Lot
45

Bitter Creek's String of Pearls (F)

Silver Moon Jamali X
Bitter Creek's Gray Dawn
Consigned by

Bitter Creek Llamas, MT



Lot
56

Shirocco 2 (F)

WSL Peruvian Y2K X CLT Hottie Tottie
Consigned by
Sunrise Ranch, AB, Canada



Lot
17

GNL Bombshell (F)

WSL Infared X Ripcurl's Maggie May
Consigned by
Great Northern Llama Co. MT



Lot
61

MRS Case Fire (M)

PME Firefrost X MRS Rosasha
Consigned by
Medicine River Suris, AB, Canada



Lot
14

FPL Sweet Pickle (F)

Abilene X Sweet Relish
Consigned by
SW Llama Company, AZ



Don't miss the FUN!



2007 event
photos
courtesy of
Elizabeth Martin



FOR PHONE BIDDING OR FURTHER INFO:

Sale contact: Jacob Mumford
(360) 901-1073 • cascadellamasale@aol.com

www.llamaalpacauction.com

WALKABOUT VI

July 25th & 26th, 2008

A Stellar Selection of the Finest Show and Breeding Stock



NEVISCA

2006 F • BESAKIH x NEVASCA



ARIELA

2006 F • EL FUENTE x ARIANA

The Journey

begins

at Hinterland

~ Consider ~

From 1999 - 2007

HINTERLAND

has bred more

Grand National

Winners

than any other ranch

in North America



ELIKXIR

2005 M • CARNAVAL x ESKALA



ESSKA

2006 F • CARNAVAL x ESKALA

*Please
join us
for the
Fun
Llama Event
of 2008*

Camelid Breeder since 1965

Eric Sharpmack
(541) 549-1215



HINTERLAND

PO Box 1839, Sisters, OR 97759

Visitors Always Welcome

Eric Sharpmack, DVM
Rch Fax: (541) 549-5262

email: hinterlandllamas@peoplepc.com Website: www.hinterlandllamas.com



Hi Tammie, when was your first introduction to llamas and what was the hook that prompted you to buy your first llamas?

I first saw a llama at a petting zoo and thought they were the most unique animals. I always said if I lived on a farm again I would get one. I eventually started dating a guy who knew of my love of the llama and in an effort to impress me talked his parents in to letting me keep some at their farm. My devotion to the llamas stuck better than my devotion to the guy!

Where are you and your llamas located? What size herd do you have? What has been your direction in your breeding program?

Since the “relationship realignment” my llamas have been living at my friend Sue Wilde’s farm.

Interview with

Tammie Efraimson-Hiraga

by Sue Wilde

She was kind enough to offer to board them and it works just great. I am a city gal employed as a mental health therapist in Lethbridge, AB but I get to enjoy life on the farm to help with shearing, herd health, halter training, shows, etc. I have about 11 llamas and my direction has been to keep large, well conformed non suri females and breed them to a high quality suri male.

You have been a member of your local club and an organizer of the local llama show each year. What do you see as the most valuable aspects of having a strong local club?

Through the ups and downs in the llama biz it is important to have people to share your love and enthusiasm for the llamas and to remind yourself that it is about more than great sales. Canadian breeders were hit hard during the BSE as we had a restricted market. The shows gave us something to look forward to and to keep us focused on improving our breeding programs. When the border opened, Canadian breeders were ready with some incredible breeding stock.

What do you think is the best way to get people to come out and support a llama show?

Offer a show that appeals to all sorts of llama people. Our show offers a lot of fun classes such as costume, obstacles, showmanship as well as classes for the serious breeders to showcase their best. This year we are planning to enhance our fleece show and we continue to focus on the youth as this industry depends on them for sustainability

You are a member of the Llama Futurity Association and have supported their sales with some great success. Tell us about your females that have done so well for you. How should people choose the right llama for a sale?

I think you have to take your best. A high profile show like LFA brings



together the best in our industry. If you want to be successful you must demonstrate a high regard for quality. I take the ones I wish I could keep!! If it isn't sad to put them on the trailer they are not the right one. It is also important as a small breeder to try and continue to support a sale as you become more familiar to the llama community.

When you are a small breeder what do you suggest as some ways to get your farm name known out in the industry? Keeping this in mind, what are your plans for this year's llama sales?

I think to become known in the industry the best tip I can give is to get involved. Whether it is on the show committee, your local club or consigning llamas to sales you must make yourself visible. This year I have consigned to Cascade two of my non suri females with very correct, high luster suri boys at side who will offer an opportunity to enhance a suri program with fabulous males and my large girls who can produce more suris! I also plan to submit more of my best to LFA.

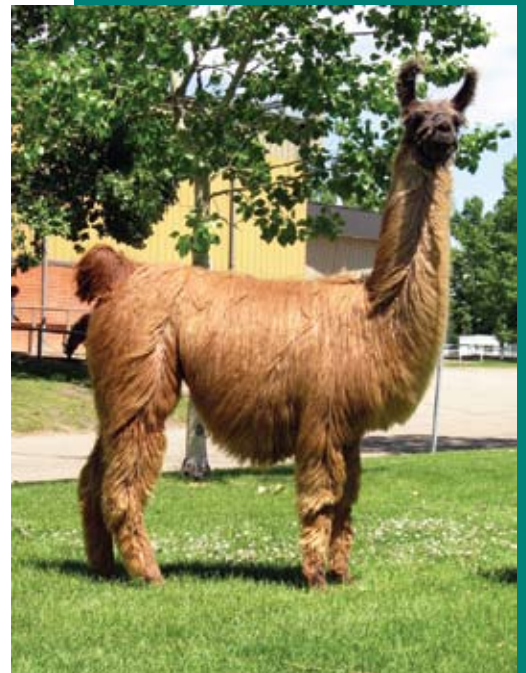
What is a favorite llama experience that you can share with us?

I think the best experience was having our first cria. We looked forward to it for months and when he arrived, although we knew he wasn't the most marketable little guy, he was special. We spent a lot of time with him and everything he did was fascinating to me. Of course having one of the high selling females at LFA last year wasn't a bad moment either!

What do you think are some important aspects to owning llamas that can keep people enthusiastic about the industry?

Find something you love about llamas besides making money as the market fluctuates like everything else. It is easy to get preoccupied with the "value" of the llamas but the value is really in what they add to our lives. For some they are simply something beautiful to look at out the front window, to others their fiber is a catalyst to artistic expression, and to most of us they have guided us to develop lasting relationships with the only other people in the world who can understand why we love llamas!

Continued on page 10...



*High Selling Female
LFA 2007 Sale
Lot 64 — Earth
Angel's
Evengeline*



**LOT
30**

CONSIGNED TO
CASCADE LLAMA SALE, MAY 3, 2008
Both dams are Reserve Grand Champions!

**EARTH ANGELS SHAKIRA &
EARTH ANGELS CRUZ (FFF Maserati)**
She is bred back to grey suri
LLLL Zak for a 3/1 package

**PERFECTION'S TO THE T
& EARTH ANGELS ROCCO**
(Peruvian Wildcard)
Sell as a 2/1 package

Tammie Efraimson-Hiraga
earthangelsllamas@hotmail.com
phone : 403 388-4385 or 403 330-4322



**LOT
90**



CRUZ

Western New York
LLAMA & FIBER
Classic

May 31 & June 1, 2008

JUDGE: Mrs. Debbie Shellabarger

Friday, May 30

- 12:00 Noon - Llamas can begin to arrive
- 9:00pm - Llamas must be in place

Saturday, May 31

- 9:00am - Llama show exhibitor meeting with Judge

- 9:30am - ALSA Llama Show begins

- 10:00am-5:00pm - Vendors open

Sunday, June 1

- 8:30am - ALSA Llama Show begins

- 10:00am-5:00pm - Vendors open

The Fairgrounds • Hamburg, NY

Early entry deadline - May 3 ★ Late entry - May 17

**For an entry form or more information, visit
www.the-fairgrounds.com**

SHOW SUPERINTENDENTS - Ron & Judy Billick



...Continued from page 9

What is the new project you have diversified into with your dog interest?

Again another experience I can credit the llamas with! I was at the last Star Sapphire sale when I discovered the most amazing looking dog. I went and spoke to the woman with the dog and she told me it was an Australian Labradoodle. I thought about the dog the whole drive home. I told the guy I was dating — who is now my husband Darren — that I was going to get a labradoodle. I spent the next year researching and then made a deposit and waited 13 more months for my puppy. We just had our first litter last week and we couldn't be more thrilled with the results.

What are the similarities of breeding for the best llama and the best dog?

I have to say I learned a lot from the llamas that has helped me with the labradoodles. Most importantly buy the best breeding stock you can afford. Don't cut corners. I believe in quality rather than quantity and an educated consumer will know the difference!

Thanks Tammie for being a part of the LamaLink and all the best in 2008 with your llamas.

**SUMMER
 FUN!**

HEADQUARTERS

AMERICA'S

FAIR

ERIE COUNTY FAIR

August 6-17, 2008

ALPACA Show
August 6 & 7, 2008

JUDGE: Deb Yeagle

LLAMA Show
August 8-10, 2008

JUDGE: Philip Feiner

*★ Early entry deadline
 June 28*

Late entry - July 12

**For more information or an entry form for these fair shows,
 visit www.americas-fair.org after May 15
 (716) 649-3900 • junderberg@americas-fair.org**

Lamas Hate Plucking!

Part 1 of 2

by Mary Pendergast

As the shearing season is sneaking up again I can't help but think of all the nice lama people out there trying to keep their animals comfortable and healthy by taking the fiber off. I also think of all the nice lama people cursing like sailors and fighting with their equipment. When I first started shearing my own llamas I remember all too well crying out in frustration, "can't someone help me?" The answer was yes, but I had to go to sheep shearing school to get it. To save you that particular agony, I have a few tips to hopefully help you get the fiber off. If you have lubricated everything in sight, and have positioned your cutter to be in contact with the cutting surface of the comb at all times, the wool should be flying. Unless of course, you have dull blades. If you have dull blades you will be plucking rather than shearing, and llamas hate plucking.

Chances are when you feel your clipper just isn't working and is good for nothing, dull blades are the culprit. Most people don't realize that brand new blades right out of the pack are rarely very sharp. Blades can also come back on the dull side from your sharpening service. I'm sure they're just trying to save some metal on your tools, but to do llamas you need sharp sharp. These factors coupled with the lag time of blades being out and blades coming back motivated me to learn how to sharpen tools. I would be unable to stay out on the road and do the numbers I do without mastering the grinder. It has been a

worthwhile challenge, and I would like to pass on a few tips to those of you beginning to sharpen your own combs and cutters. These techniques apply to standard blades rather than hair blades, which require a completely different set up.

The equipment needed to sharpen combs and cutters includes a grinding wheel with stand, arbor and motor (Figure A), a pendulum (Figure B) and glue and grit purchased from the shearers equipment supply. I use a cast iron wheel

on the paper. With a 4" sponge brush apply a healthy amount of glue to the wheel, spreading counterclockwise around the entire grinding surface of the wheel and finishing with even strokes from the inside edge of the grinding surface to the outside edge of the wheel, being careful not to get any glue on the inner ring (which is not a grinding surface) or over the outer edge. Glue and grit in these two areas can make the wheel run lopsided. The goal is to have a nice even surface to sprinkle with grit. Bumps or lumps will ding tools, and the glue isn't thick enough if you can still see any of the grooves of the grinding surface. Heap the grit on with a can similar to a salt shaker, making sure the entire wheel is coated. After allowing the glue to dry, excess grit that doesn't stick can be dumped onto the newspaper and poured back into you shaker. All this glue and grit business needs to happen

pretty fast, before the glue begins to dry. If the glue dries too fast, the grit won't stay on. In areas of the country that are extremely dry, you may have to add some water to your can of glue in order to keep it from drying too fast.

In areas that are humid

I find I need to "cook" the wheel in an oven or on a burner at low heat for a few minutes in order to get a good hard set.

Continued on page 12...

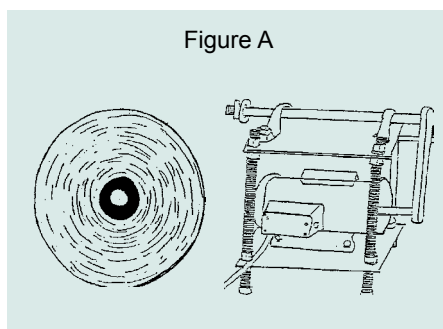


Figure A

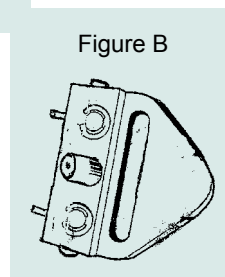


Figure B

with 1/2 degree bevel, mounted vertically and run counterclockwise with a 3hp motor at about 2600 rpms. The pendulum holds the tool to be sharpened and the glue and grit are spread on the wheel to provide a good surface for sharpening. The glue is water soluble which allows the set to be changed by simply soaking the wheel in water.

To set the wheel begin by spreading some newspaper out and place the wheel

Paco-Vicuñas
Linda Hayes
haystees@sopris.net Carbondale, CO 800-815-0488

www.paco-vicunas.com

M R
SAPAVECO RANCHES
Exquisite, well-bred, silky llamas
Florence, TX Rocksprings, TX
 
www.sapavecoranch.com
llamas@sapavecoranch.com
(512) 751-5363
F C

...Continued from page 11

A soft set is very quiet and even mushy feeling as the tools move back and forth and will do nothing but polish the tools rather than sharpen them. You can fix a wheel with a soft set by sticking it in the oven on low for a few minutes to harden the glue, being careful not to leave it in for too long or on too high a temperature to avoid bubbling and chipping. Bubbling and chipping mean do over. Cooking the wheel also works when you need to set a wheel in a hurry, although I prefer to set a wheel the night before.

If the glue has dried too fast the grit flies off and you find you're running your blades over nothing but wheel, resulting in lots of heat and no sharp. The pendulum will get so hot you can hardly hang on to it. This kind of heat can also indicate the set is worn out and needs to be changed. Working a set like this feels grabby and is noisy. I hate nothing worse than dull tools so I change

my set fairly often, grinding maybe 10 combs and 20 cutters to a set. Most wheels can be set on both sides and when one side wears out just flip the wheel and keep going. A set should never be left on the wheel for more than 30 days as it will become difficult to soak it clean again. A wire brush can be used to clean the wheel completely, scrubbing with the grain of the sharpening surface.

Now that the wheel is properly set, the next step is to find a work area with the proper lighting. Artificial light is the best, shining from behind and to the right of the wheel (Figure C). This is typically the only light I have on while sharpening and it allows the sparks flying off the tool to be easily seen. When a tool is held up to this light, it will also catch the bright shine of a dull edge. I work on the left side of the wheel with the teeth pointed up. I have seen people grind on the right side of the wheel, which requires the teeth to

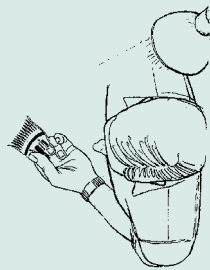
be pointing down. They will sharpen either way. I always sharpen combs first because they won't wear down as fast on the fresh grit as the cutters will. The whole idea with sharpening tools is to sharpen them just enough to cut without wasting any of your metal.

After re-checking the nut that holds the wheel in place for at least the third time (it will saw a hole in the barn if it comes off of there, not to mention the stitches if it hits you), you are ready to turn your grinder on and lay a tool to the surface. The pendulum is spring loaded on one end with posts that fit into the holes on the comb. The middle bar is pointed down while grinding combs, and pointed up to do cutters. I am right handed, so I hold the pendulum in my right hand, and then steady that hand with my left

Figure D



Figure C



Canadian Mystic Meadows

Consigned to the Cascade Llama Sale May 3 & 4 2008

BML TREASURE
Bred to Northern Reflections Eclipse
Lot 72

CMM PRAIRIE STORM
Male
Lot 85

WHITE STAR'S GRAY CHEZ
Bred to WSL Sola Nero
Lot 29

Colin, Marie & Miranda Towells
Box 216 • Magrath, Alberta • T0K 1J0 • 403 758 6051
www3.telus.net/public/mtowells • mtowells@telusplanet.net

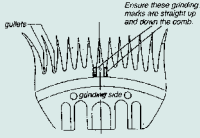
CriVen Llamas Presents...
OZARK SALE ENTRIES

Keeley Charm
Jade's Lusterman X
Needmors Tickle Me Pink
Sells with Female cria at side.
3/1 pkg!
Lot 8

CTW Range Queen
CTW Wrangler X
Uber's Rhapsody
Sells with Male cria at side.
3/1 pkg!
Lot 41

Chris and Venesa Carter • Rogersville, Missouri
417-753-4966 • crivenllamas@aol.com
crivenllamas.com

Figure E



by grabbing my wrist (Figure D). With the comb loaded onto the pendulum, gently place it on the rotating wheel in the middle of the grinding surface. That means middle left to right, and a little above middle top to bottom. The grind marks in the middle of the comb will be straight up and down (Figure E) when the tool is in the proper place on the wheel. Too high on the wheel and they slant one way, too low they slant the other. With light pressure run the tool back and forth across the wheel, going so far left that 3 of the 13 teeth will be off the wheel (Figure F). Do this 3 or 4 times and on the last pass leave the comb on the left side of the wheel with a little extra pressure for about 3 seconds before checking for progress (Figure G). The entire surface of the comb must be ground, especially where the cutter has been running across the teeth. When you hold the comb to the light, you are looking

Figure F

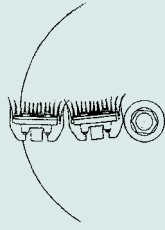
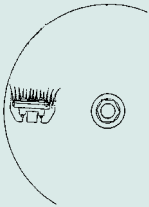


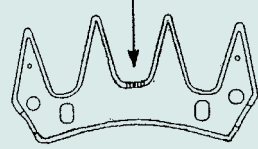
Figure G



for shiny silver lines on the edges of the cutting teeth (Figure H). These lines indicate dullness because light will reflect off of a blunt edge but not a sharp edge. Grind until those silver lines and wear marks are gone. The next thing to notice is that the comb will be throwing sparks. Those sparks need to come from the entire length of the cutting surface of each tooth in order to be completely sharp. I want a "fuzzy" appearance to the edges of the teeth before I will call it sharp. You'll know a fuzzy edge when you see it (Figure I).

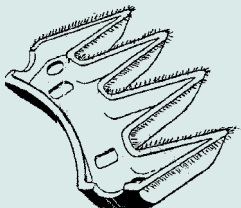
It is important to be able to manipulate the pendulum with differing degrees of pressure to target specific teeth that need work. The outside of the wheel sharpens faster than the inside of the wheel, so a little extra pressure needs to be applied on the inside in order to get a uniform sharpness. Unless this adjustment is made the cutter or comb will over time wear thin on one side and effect the performance of the tool. As you shear with a tool like this, all of a sudden it will take more effort

Figure H



to run the clipper across the animal, and there will be a row of fiber that is really long compared to the rest because the dull tooth pulls before it cuts. That's plucking not shearing, and we all know what that means.

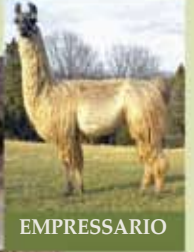
Figure I



Next issue, we will tackle cutters! In part 2 of 2 – Lamas Hate Plucking!

CATAWISSA LLAMAS

Consigned to the
Ozark Llama Sale
May 3, 2008
Lot 23



EMPRESSARIO

CTW DORY

CTW King Fish x GNLC Karin
Sells bred to suri Empressario

INTRODUCING *STARLITE*

SHINING IN THE SHOW RING THIS SPRING

CTW STARLITE (F)

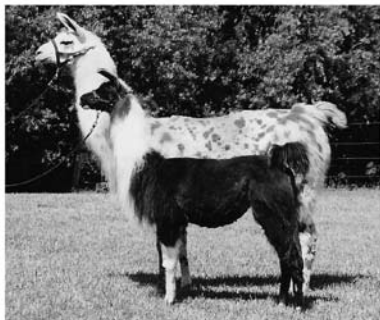
DOB 10-4-07
Navarro x CTW Starkist



LARRY KISNER • 800-397-8145
lkllamas@aol.com

WWW.CATAWISSALLAMAS.COM

Minis Stand Tall!



Show off your minis!

MILLENNIUM MAGIC SHOW
May 3-4, 2008



P.O. Box 8, Kalispell, MT 59903 • 406-755-3438
www.miniaturellamas.com

CANADIAN CONNECTION



Confucius Say...



by Sue Wilde

像教行子孔師先



A couple of weeks ago I was teaching at an elementary school and the day was supervising the grade 6 play practice. Part of the play featured Confucius and a few of his sayings. We know that all of Confucius' sayings are thought provoking and meant to provoke us to action. The "saying" that stuck with me that day went like this:

Confucius say: "do not worry about who knows you but of doing things that make you worthy of being known."

This saying provoked me to some serious thought. We know that marketing and selling is based on a personal level. We have all said that we will buy from "this store" because we were treated so well there and the products were great but we won't buy from "that store" because we weren't treated well and their products were not of quality. This is the same with selling our llamas!

What can we do that will make us worthy of being known? This question is not new. It can provoke us to some serious consideration but the important part is being motivated to act! Think of the people that you know that are "known." What have they done that make them worthy of many knowing them? Have they volunteered? Have they supported other volunteers? Have they assisted others? Have they promoted? Have they participated?

Have they produced a great product? Have they stood behind their products? Have they given value to others?

Now ask those questions about yourself!

Many people are known for the opposite side of these qualities. It is up to all of us how we wish to be worthy of being known. Our llama industry is important to us because we all love our llamas and desire that they remain worthy of being known too. We want them to have great value, not just monetarily but as a creature worthy of being known and owned. Think of all the times you have jumped to the defense of your llamas against the spitting myth. We are all quick to promote them as beautiful, enjoyable and profitable because we want them to be deemed "worthy of being known"!

Can we accomplish this on our own? It takes the "llama village" to raise llamas and make our industry "worthy of being known" by doing the things that will make us worthy. Volunteer! Support Volunteers! Participate! Assist! Produce the best you can and as Confucius say: you will be known because you are doing the things that make you worthy of being known! The bonus? You will be known for your good work and inspire others to also be worthy of being known! It takes team work to make the dream work!



**Exotic
to the Max!**

For more information and
to find the farms that are
lucky enough to own them
Check out...

Argentine
Llama
Afiomados

www.ArgentineLlamas.org

Ozark Llama Classic Sale & Show

Missouri State Fairgrounds • Sedalia, Missouri

Friday, May 2, 2008

8:00 a.m.

4:00 p.m.

6:00 p.m.

Llamas should begin arriving, no earlier

Check-in begins for sale llamas

Sale llamas must be in place

Arrangements must be made for late arrivals.

Saturday, May 3, 2008

Noon

2:00 p.m.

4:00 p.m.

Show llamas must be in place

Pre sale mixer with hors d'oeuvre and tasty margaritas

Llama sale begins (Darrell Anderson, Auctioneer)

Sunday, May 4, 2008

8:00 a.m.

8:30 a.m.

Judges Meeting (Ray Howard & Patti Fischer, Judges)

ALSA show, Missouri State Fairgrounds in the Coliseum

For phone bidding information please contact

Gary Beeson 417-234-9523 • Mary Beeson 417-234-9049

Jane Livingston 417-689-1235 • Steve Smith 314-954-3738 • Larry Kisner 314-580-5315

We now accept Visa and MasterCard for your added purchasing convenience! 3% fee will apply to purchases.



Consignors

Lot

Gary & Mary Beeson, G&M Rolling Hills, Ozark, MO.....	10, 27, 35, 44
Venesa & Chris Carter, CriVen Llamas, Rogersville, MO	8, 41
Randy Cipriano, RTC Llama Ranch, Garland, NE	7, 26, 37, 46
Judy Gustafson, BJ Llamas, Waverly, IL	17, 34
Larry Kisner, Catawissa Llamas, Catawissa, MO	23, 52
Robert LaMorte & Patrick Fuller, Northwind Farm, Sawyer, MI	2, 42
Lew & Jennifer McGinnis, Superior Farms, Oklahoma City, OK	A, 5, 11, 19, 31A, 31B, 39, 49
Jerry & Barb McRoberts, McRoberts Game Farm, Gurley, NE.....	3, 14, 29, 43
Dawn Moore, Wild Apple Llamas, Corvallis, MT	21
Tamara Olsen, Tiki Llamas, Florissant, CO	15
Kim & John Peters, Calypso Llamas, Lockport, IL	13, 33, 45
Rex & Dalene Reinecker, Wheatfield Llamas, Quinter, KS	4, 18, 36
Sally & Jeff Rucker, Stage Stop Llamas, Florissant, CO.....	6, 16, 30, 40, 47
Dayle Russell, Caru Llamas, Herrin, IL	25
Steven Smith, Pacific Llamas, Catawissa, MO	22
Larry & Judy Steffel, Hidden Creek Llama Ranch, Evergreen, CO	9, 28, 38, 48
Terri Strouse & Susan Gray, New Ventures, LLC, Caledonia, MI	12, 51
Mike & Janet Wilkins, Wilkins Livestock Ranch, Geneva, NE	1, 24, 32
Mike & Janet Wilkins & Mike & Sandra Bradford, Geneva, NE.....	50
Joyce Wilson & Kathy Lamphear, TJ Llama Farm/ R&K Farms, McPherson, KS.....	20

Accommodations

Sedalia:

Budget Host Super 7, 5650 s. Limit Ave.

660-827-0215

Georgetown Inn, 22166 Hwy H.

660-826-3941

Stardust, S. Hwy 65 **660-826-2488**

Hotel Bothwell, 103 E. 4th St **660-826-5588**

American Inn, 1217 S. Limit, S. Hwy 65

660-826-5588

Sunset Motel, S. Hwy 65 **660-826-1445**

Super 8 Motel, 3402 w. Broadway,

W. Hwy 50 **660-827-5890**

Directions:

MapQuest Directions From Kansas City

1 Go East on I-70 to US 65 (76.3 miles / 128.9 km)

2 Go South on US 65 (18.6 miles / 31.4 km)

Total Distance: 94.9 miles (160.3 km)

MapQuest Directions From St. Louis

1 Go West on I-70 to US 65 (173.3 miles / 292.9 km)

2 Go South on US 65 (18.6 miles / 31.4 km)

Total Distance: 191.9 miles (324.3 km)

Sales Terms & Conditions

1. Any blemishes, unsoundness, defects or irregularities of any kind must be declared and the auctioneer is hereby authorized to announce all known problems and all written guarantees.

2. All llamas in the sale must have a veterinarian signed certificate of health within 30 days of the sale certifying the animal to be free from infection and contagious disease. All females selling as pregnant must be checked by a DVM not more than 30 days before the sale and proof of pregnancy must be turned in to the sale management prior to the sale. All breeding males must be checked and certified by a DVM to have both testicles present. All animals should have a permanent ID as required by the state of Missouri.

3. All sales constitute a contract between buyer and seller of each animal sold. Ozark Llama Classic Sale assumes no responsibility, legal or otherwise, in regard to the sale contract.

4. All llamas will be cataloged in lottery fashion except when a consignor enters more than one llama, then these entries will be sold throughout the sale unless the consignor requests that their llamas be in consecutive order. Llamas will sell in the same order as they are listed in the catalog.

5. The consignor agrees to hold Ozark Llama Classic Sale harmless from damages in the event that unusual or unforeseen circumstances result in the change of location, change of time or date, or cancellation of similar modification of this sale.

6. All registration certificates, along with entry fees, and pictures must accompany consignment contract and all must be signed by the legal owner

or legal agent. A registration application is required on unregistered crias selling with their mothers.

7. It is the consignor's responsibility to feed and water their own llamas at the sale site and make sure that their llamas are brought to and shown in the sale ring and then returned to their stalls. The consignor is to furnish the buyer with a halter.

8. The highest bidder will be the buyer. In case of dispute, the sole authority to settle the bid rests with the auctioneer.

9. Terms of the sale are cash, cashiers check, travelers check and personal check. Payment must be made in full following purchase to the sale cashier.

10. Buyer will sign a "Purchase Form" at time of purchase. Buyer accepts all risk, care and expenses of the animal from this time forward.

11. Consignor authorizes The Ozark Llama Classic Sale to accept payment for entries at the sale and understands that the same is under no responsibility to pay him/her for entries until such time as the buyer has made satisfactory payment to them. The consignors will be paid by check less commission.

12. Arrangements for removal and delivery of animal after the sale are between buyer and seller.

13. All liability for statements in the sale catalog rest with the consignor. Please check accuracy of statements with regards to winning, training, and ability of animal.

14. Sale management reserves the right to reject or accept any consignment.

15. The sale management assumes no liability for loss or injury due to theft, mysterious disappearance, sickness, improper handling or acts of God.



Consignment of Lew & Jennifer McGinnis
Superior Farms, Oklahoma City, OK

Donated Breeding to
Lucchero

Superior Farm Llamas has donated an exclusive outside breeding opportunity to Lucchero to the high bidder of this service sire donation. All proceeds from the sale will go to the " Best Male" and "Best Female" in the show. Show Me The Money!



Consignment of Mike & Janet Wilkins
Wilkins Livestock Ranch, Geneva, NE

WLK Guillermo's Gracee
Female DOB: 9/12/07 ILR# pending

LW Willie K #LL-61685
Senor Guillermo #LL-105285
Bellisima Of Tunitas #LL-67918

WLK Heat Wave #LL-220506
WLK Gracious Me #LL-252305
WLK Goodness Gracious #LL-204331

Guillermo's Gracee has an amazing pedigree. Heat Wave was a 3 time Futurity winner and Yearling National Champion. Her dam, Gracious Me, was also in the Top 10 of the Celebrity Futurity and has two Grand Championships in the Grand Slam Show. "Gracee" is bound to show well for you as well as bringing great bloodlines to your breeding program.



Consignment of Robert LaMorte & Patrick Fuller
Northwind Farm, Sawyer, MI

NWLF's Cosa Bella
Female DOB: 10/6/06 ILR# 268196

GC's Chock Full O' Nuts #LL-R227682
Mister Rainman #LL-R258249
G.C.'s Kinky Quiche #LL-R157480

White Heat #LL-R62061
GC's Half N Half #LL-R
GC's Ashley #LL-R252905

NWLF 's Cosa Bella! A show winner, and member of the 07 Reserve Get of Sire at the Grand Nationals. Her half sister by her mother sold at LFA to Superior Farms. Cosa Bella's flashy presence turns heads at every show that she has been in. We are happy to support The Ozark Sale by bringing this beautiful and correct girl for your consideration.





Lot
3

Consignment of Jerry & Barb McRoberts
McRoberts Game Farm, Gurley, NE

MGF In The Limelight

Female DOB: 8/1/06 ILR# 270580

Chilean San Juan #LL-S245719

Argentine Don Zunca #LL-S190616

MGF Afterglow #LL-R248775

MGF Aglaze #LL-R137127

This beautiful white suri is the result of one of our favorite crosses – the suri Chilean San Juan on one of our half Argentine females, the lovely....MGF Afterglow. At ease in the spotlight...this female will always be "In The Limelight!!" Check out our website for more family photos. www.mcrobertsgamefarm.com



Lot
4

Consignment of Rex & Dalene Reinecker
Wheatfield Llamas, Quinter, KS

Wheatfield's Abigail

Female DOB: 5/26/07 ILR# 271633

White Heat's Trilogy #LL-233632

LW Ice Cream Sundae #LL-107798

This young female has just begun her show career and by sale time should have a long list of wins! Her mother, LW Ice Cream Sundae has produced some of our finest – Wheatfield Fudge, Wheatfield's Chocolate Chip, Wheatfield's Miss Elegance – all Halter Champions. Another daughter in our herd, Dbl Dip Chocolate Sundae has produced Halter Champions and show winners. "Abby" will be sure to produce with her sire being "White Heat's Trilogy", who has sired many show and futurity winners & Halter Champions. Trilogy is a Halter Champion and winner of ALSA Nationals, LFA & Celebrity.



Lot
5

Consignment of Lew & Jennifer McGinnis,
Superior Farms, Oklahoma City, OK

Renegade's Mimosa

Bred Female DOB: 10/12/05 ILR# 265125
Service Sire: WSL Ekati Breeding Date: 03/08

Silver Peru #LL-R126519

BAL Renegade #LL-R241700

MGF Renaissance #LL-R217268

Lion of Bolivia #LL-R92181

Lion's Melosa #LL-R156299

Magia De Americanas #LL-R104635

MIMOSA is a big stout powerful female that has grown into a large framed girl. Her background speaks for itself. Having Renegade on her paternal side and going back to the Lion of Bolivia maternal lines, this female is loaded with pedigree potential. If that is not enough, she is bred to our suri herdsire EKATI. Don't miss out on a chance to own this great stud female.



Consignment of Sally & Jeff Rucker
Stage Stop Llamas, Florissant, CO

BMLL Siesta

Bred Female DOB: 6/03/03 ILR# 254401
Service Sire: MGF Icebreaker Breeding date: TBA

Fire N Ice
Sharp's Primo #LL-216301
WWW Macho Nero's Simply Sumptuous

Codiak
French Maide #LL-181001
Marlow's Nutmeg

Siesta has had two excellent male cria for me. I am retaining her cria from 2007 as a junior herdsire. She is 43.7 inches at the withers and passes her defined lock structure, size, and excellent conformation on to her cria! I bred her to my suri Argentine Don Zunica son, Icebreaker.



Consignment of Randy Cipriano
RTC Llama Ranch, Garland, NE

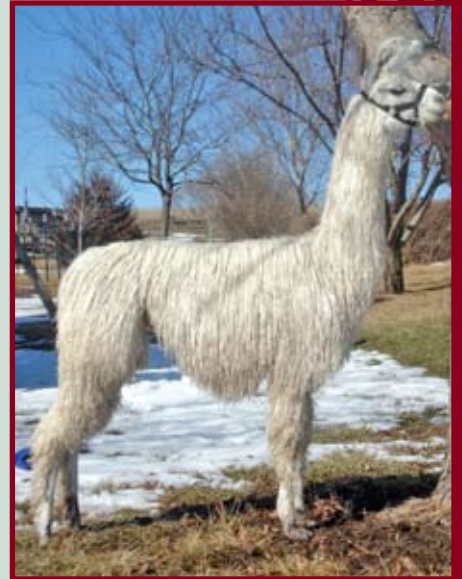
Storm RTC

Male DOB: 4/05/06 ILR# 265463

Chileno Chiri Chico #74 #LL-R200567
FFF Chiri Colipe #LL-R235609
Cebra #LL-S208929

Kantu P5 #LL-S177344
Peruvian Kolette #LL-R223727
Peruvian Jobjoba PC-1 #LL-S190462

Exotic Suri Male!! Ready to breed this summer/fall. Storm has a great disposition. His sire FFF Chiri Colipe finished in the top ten Grand Nationals Suri Males. Both Storm's sire and dam are extreme suri! Sells with RTC Ranch guarantee. Go look at him www.rtcllamaranch.com.



Consignment of Venesa & Chris Carter
CriVen Llamas, Rogersville, MO

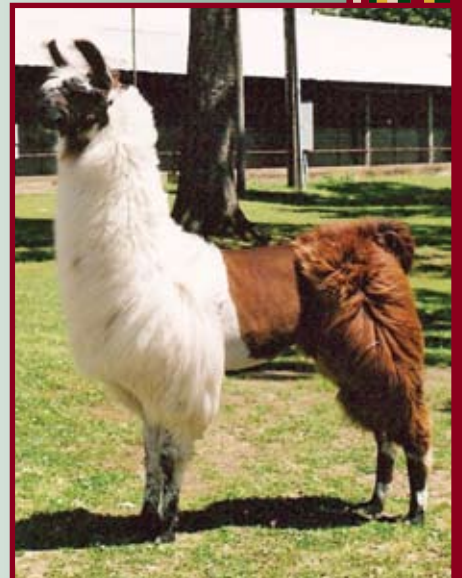
CTW Range Queen

3 in 1 Female DOB: 6/04/03 ILR# 252208
Service Sire: TBA Breeding Date: TBA

Range Rover #LL-R85569
CTW Wrangler #LL-R214978
Valdra #LL-R100121

Uber's Sumac #LL-R52044
Uber's Rhapsody #LL-R66495
Uber's Saddle #LL-R66494

Looking for a beautiful girl out of a highly respected breeding program? Here she is. Range Queen was bred by Catawissa Llamas and comes from a long line of respected bloodlines. She is currently bred to our Halter Champion Mystic's Merlin and will have his baby at side at sale time. Merlin boasts a pedigree of beautiful, suri and silky fibered individuals that have won at the highest levels in the show ring. He has gorgeous ringlets of silky fiber, size and conformation. Range Queen will be bred back to one of our suri males before the sale. A wonderful 3 in 1 package. For more info, please email crivenllamas@aol.com





Lot
9

Consignment of Larry & Judy Steffel
Hidden Creek Llama Ranch, Evergreen, CO

HCLR Mariska

Female DOB: 6/07/07 ILR# 271077

Chileno V Duty Free # 142
Chileno Canaletto II
Chilena Blanquita #R047

RAR Old Spice
HCLR China Doll
Amethyst TCL

Sweet and easy to handle, Mariska possesses silky suri-type fiber. Her dam is a huge beautiful red silky that's part of our foundation herd. Her sire is a red and white extreme suri. Mariska has all the genetics to pop out fabulous fleeced offspring.



Lot
10

Consignment of Gary & Mary Beeson
G&M Rolling Hills, Ozark, MO

GMRH Lucia

Female DOB: 5/11/07 ILR# 271063

Llanero De Temuco
GNLC Night Moves #LL-R207736
Bandita De Temuco

Get It On #LL-R95031
AO's Starfire #LL-R189536
Miss Angelique #LL-R98767

This young lady will catch your eye. For starters she has a great disposition and fiber. Her sire, GNLC Night Moves has done exceptionally well in the show ring. We feel she should as well. For further information email beesongm@aol.com



Lot
11

Consignment of Lew & Jennifer McGinnis
Superior Farms, Yukon, OK

Spicy Coriander

Bred Female DOB: 4/25/06 ILR# 266459

Service Sire: HCLA Bolivian Easy Money Breeding Date: 4/08

La Raya Peru #LL-I106527
Silver Peru #LL-R126519
Constance #LL-R55302

Amigo De Peru #LL-R125866
Riley-Ginger Snap #LL-R214374
Voomarang #LL-R125073

CORIANDER is a powerful female that is still amazing us. Her lineage says it all....She is a Silver Peru daughter and an Amigo De Peru granddaughter. WOW! If this isn't enough she is bred to our "Superior Sire" EASY MONEY. EZ\$ is sire to some of the most sought after suri animals in the market today.



Consignment of Terri Strouse & Susan Gray
New Ventures, LLC, Caledonia, MI

NV'S Leyla

Female DOB: 5/24/07 ILR# 272465

HCLA Bolivian Soul Man (CAN) #LL-S234155
M.R.S. Night Vision #LL-R258698
M & W Dusty Rose (CAN) #LL-R251798

Chavago #LL-R145798
FFF Chavago's Lara #LL-R232856
Senorita Hermosa #LL-S208910

A statuesque M.R.S. Night Vision daughter. Elegant large frame and beautiful fleece. 35lbs @ birth, this girl is an eye catcher. Sire is Canadian genetics at it's finest and unrelated to all other suri bloodlines. Night Vision has a closed breeding program which offers you an exclusive opportunity to add these genetics to your herd. Can be bred to any other suri lines. Dam is a tall stretchy girl from the Burgess herd that has given us 3 show stoppers suri females. Honoring full farm guarantee. "Truly the Cartier of Suri Excellence."



Consignment of Kim & John Peters
Calypsos Llamas, Lockport, IL

Calypso's True Love

Female DOB: 4/22/07 ILR# 271905

Peruvian Vice #LL-S213516
WSL Peruvian Quicksilver #LL-R251931
P496 Fortuna 92 #LL-S163756

RAR Chilean Magnet #LL-R110176
All My Love #LL-R217566
Monica of Cuzco #LL-R72475

True Love is a flashy daughter of silver suri WSL Peruvian Quicksilver out of a 425# full Chilean female. She is ready to show and should catch the judge's eye with all her pizzazz!



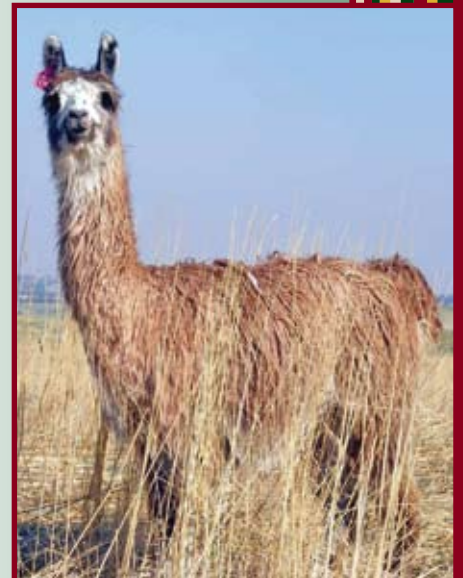
Consignment of Jerry & Barb McRoberts
McRoberts Game Farm, Gurley, NE

MGF Red Baron

Male DOB: 8/26/06 ILR# 272077

Chilean Aviator #LL-S245685
RAR Richochet #LL-R103584
MGF Devine Deva #LL-R195974
MGF Celine #LL-R142683

This stretchy Aviator son has great presence and flowing suri fiber. His mother is the Devine Deva...as her name implies. With his outcross sire - he makes a great choice for a coming herdsire. Check out our website for more family photos. www.mcrobertsgamefarm.com





Lot
15

Consignment of Tamara Olsen
Tiki Llamas, Florissant, CO

Tiki Quinn's Abigail

Female DOB: 6/24/07 ILR# 270208

Marino #LL-180048
Alababy's The Mighty Quinn #LL-240913
Alababy #LL-217304

SRF Peruvian White Knight #LL-205665
La Sola ABSR #LL-250671
Isola #LL-91011

She's got presence, she's got flash so get this girl to the show ring! Fine silky fiber, superb bone and conformation. "Abby" is your opportunity in waiting. For more information email tikillamas@aol.com. Home of little treasures.



Lot
16

Consignment of Sally & Jeff Rucker
Stage Stop Llamas, Florissant, CO

Lucky Charm's Catalina

Bred Female DOB: 5/15/00 ILR# 229114
Service Sire: 5 Color Draw Breeding Date: 9/04/07

Catskil Tag #1
Santiago Amigo
Chilean Ry-An-White

Chilean LeRoy Brown
TVL Lucky Charm
Silver Chimes

I have retained two of Catalina's daughters in my herd and consider her to be one of my best producing females. She is also a sweetheart. All of her cria have had extremely fine fiber. She is bred to my suri Appaloosa Amberina 21 son. He has heavy bone and has produced some outstanding appaloosa babies.



Lot
17

Consignment of Judy Gustafson
BJ Llamas, Waverly, IL

BJL At-A-Tudy

Female DOB: 5/14/07 ILR# 269941

Range Rover #LL-R85569
CTW Wrangler #LL-R214978
Valdra #LL-R100121

Chilean Challenger #LL-R93561
MGF Chanson #LL-R203500
MGF Chantilly Lace #LL-R109289

At-A-Tudy was born with an attitude and still has one. She thinks she is the best. A very correct girl. She will be a year in May. Her dam is MGF Chanson and her sire is CTW Wrangler so she has a lot of Chilean in her background.



Consignment of Rex & Dalene Reinecker
Wheatfield Llamas, Quinter, KS

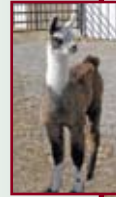
LW Blue Bayou

3 in 1 Female DOB: 11/05/94 ILR# 125863
Service Sire: TBA Breeding Date: TBA

LW Willie K #LL-61685

LW Kissam
LW Blue Willow #LL-68882
LW Blossom

Don't miss this outstanding three in one package. Blue Bayou has been a great producer for us with no birthing or milking problems. The cria by her side is sired by Wheatfield's Choc-O-Latte, Halter Champion and Top Five at ALSA Nationals. His first two cria both placed at the 2007 Nationals. "Blue" will be bred back by sale time and sire will be announced. "Blue" is a very sweet girl and very easy to work with. Her babies have all shown well and her 2007 cria, Blue Thunder, placed in the Top 5 at Nationals.



Consignment of Lew & Jennifer McGinnis
Superior Farms, Yukon, OK

Silver's Opera

Bred Female DOB: 9/29/05 ILR# 265122
Service Sire: Sir E Sur-Real Breeding Date: 03/08

La Raya Peru #LL-I106527
Silver Peru #LL-R126519
Constance #LL-R55302

Chilean Armani #LL-R215034
RDRL Opal #LL-R250281
Chilean Pearl #LL-R210801

OPERA is a dramatic black and white girl. She is a striking paint with incredible lineage. To top that off all this is wrapped with incredible locked silky fiber. Because of all these key ingredients we have bred her to our "Superior Sire" SIR E SUR-REAL. This pairing is going to be unbelievable!!!



Consignment of Joyce Wilson & Kathy Lamphear
TJ Llama Farm/ R&K Farms McPherson, KS

HLF Olympia

Bred Female DOB: 6/15/95 ILR# 144626
Service Sire: Woodsedge Monte Carlo Breeding Date: 12/08/07

The Fiduciary
Black Label
Au Jus

Touchstone TL
Mandi's Evening Shade
Mandi

Olympia is a wonderful mother and easy birther with lots of milk. Her last 2 babies were top 10 at Nationals. We both need to cut back on our females, so our loss is your gain. She sells exposed to Woodsedge Monte Carlo, a deep red & white suri.





Lot
21

Consignment of Dawn Moore
Wild Apple Llamas, Corvallis, MT

Bauernheim's Got Milk

3 in 1 Female DOB: TBA ILR# 216948
Service Sire: Kobra's Largo Breeding Date: TBA

Vis-A-Vis
Merit 164908
Tana

Inca Gold
Bauernheim's Naima 53777
Tillman Catskill Nairobi

Bauernheim's Got Milk is a tall, stretchy Merit daughter who is a wonderful mom. We are selling her only because we have a small herd and own her half-sister (another Merit daughter) and are including her male cria from October 2007 by our own wonderful Kobra's Largo. We are re-breeding her to Largo in March. She is a superb mother and an easy birther. The service sire, Largo, is our half-Argentine male who was 2007 ALSA Rocky Mountain Regional Grand Champion and a top 10 finisher at Grand Nationals. He is consistently throwing heavy bone and an abundance of very fine dense fiber to his cria. Put your hand in the air to own this special lot!



Lot
22

Consignment of Steven Smith
Pacific Llamas, Catawissa, MO

LAMS Abbigale

3 in 1 Female DOB: 6/08/02 ILR# 246379
Service Sire: GNLC Vulcan Breeding Date: TBA

Riny's Grand Slam #LL-R600030
Grand Calypso #LL-R102499
Riny's Lyra #LL-R73039

Juan's Gallant Fox #LL-R62273
Arista LL-R#105742
Lady Augusta #LL-R62274

Abbigale is a big colorful girl with great conformation and is a proven producer. She will be a welcome addition to your herd. Along with her comes her male suri cria. Sired by Staletto (Chilean / Domestic Suri, Chileno Canaletto II son) To sweeten this up, she is bred for a Spring 09 cria to GNLC Vulcan (Doc Martin Son) Vulcan has produced many Black Suri fibered crias. The combination of these blood lines is surely to make one fabulous cria. So don't pass up an opportunity for a package such as this. For more info contact Steve @ www.pacificllamas.com



Lot
23

Consignment of Larry Kisner
Catawissa Llamas, Catawissa, MO

CTW Dory

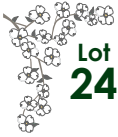
Bred Female DOB: 4/22/06 ILR# 269373
Service Sire: Empressario Breeding Date: TBA

Tuna Catcher #LL-R158539
CTW King Fish #LLR232548
Queen Ann's Lace #LL-R188062

MCF Etol #LL-R107989
GNLC Karin #LL-R229438
GNLC Carina #LL-R189884



CTW Dory is a granddaughter of both Tuna Catcher and Etol. Throw in King Crimson and Lanero de Temuco on the Grandmothers and you have a recipe for a picture perfect llama, just like Dory. She will be bred to our super suri Reserve LFA Champion and Celebrity Top Ten finisher, Empressario. Expect a great cria. Dory is guaranteed to be healthy and reproductively sound.



Consignment of Mike & Janet Wilkins
Wilkins Livestock Ranch, Geneva, NE

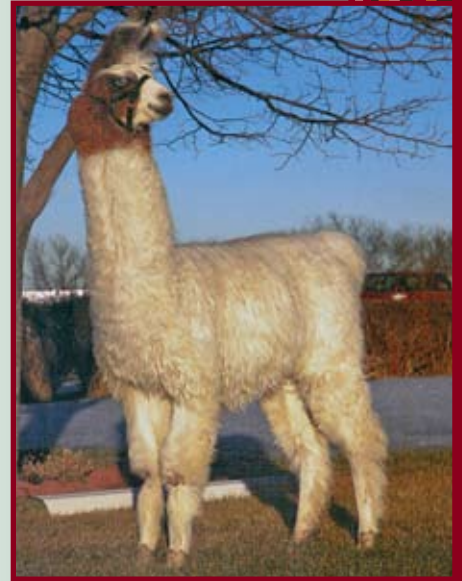
WLK White Hot

Male DOB: 6/23/07 ILR# 269921

White Heat #LL-62061
WLK Heat Wave #LL-220506
Chilean Amberina #LL-147860

Osito De Temuco #LL-145037
Tomollas Jurah #LL-215226
Tomollas Justina #LL-58431

This young male shows again what excellent bloodlines can do for a breeding program. Heat Wave won 3 Futurities and was Nationals Yearling Champion. "Jurah", his dam produced "Premara", who won the LFA twice and was Reserve Champion at Celebrity. Jurah's next cria was in the top 10 in the Futurity. This boy will produce outstanding show cria for you. His conformation and movement are perfect and his fiber is super silky.



Consignment of Dayle Russell
Caru Llamas, Herin, IL

Caru Cabaret Girl

Female DOB: 11/09/06 ILR# 268455

Peruvian Vice #LL-S213516
WSL Peruvian Quicksilver #LL-R251931
P496 Fortuna 92 #LL-S163756

Macho's Ace #LL-R58409
GAF Lillith #LL-R209793
Shamrocks Lilly #LL-R69484

Cabaret Girl is a stretchy gal with suri type fiber. Her sire was the highest bid stud service at the LFA stud auction. She will be one of the first females out of Quicksilver that is offered to a public auction. Her unique bloodlines will allow you to breed her to most any suri line in the USA. Take Cabaret home and show her or just use her in your breeding program.



Consignment of Randy Cipriano
RTC Llama Ranch, Garland, NE

Shakira RTC

Female DOB: 10/30/06 ILR# 267235

Argentine Don Zunica #LL-S190616
Argentine Fresco #LL-R233492
Argentine Moore #LL-S190676

The Boss #LL-R81056
Liberty RTC #LL-R235665
Fidelia #LL-R67173

Shakira RTC has splash, structure and color with silky fiber!! As a yearling she was the Reserve Grand Champion HW female at the Nebraska State Fair 2007. She is half Argentine. Her sire is Argentine Fresco. She sells with RTC Ranch guarantee. You can view her, and sire/dam on our website www.rtcllamaranch.com.





Lot
27

Consignment of Gary & Mary Beeson
G & M Rolling Hills, Ozark, MO

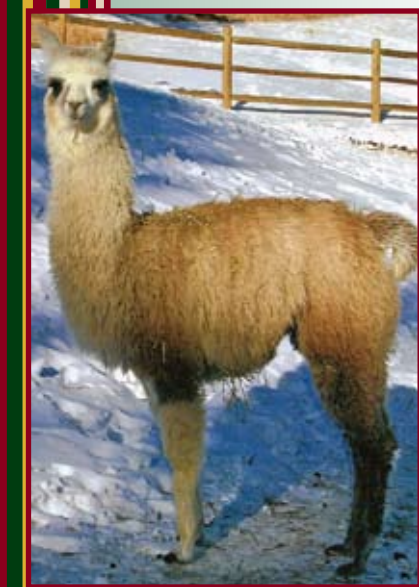
GMRH Evita

Female DOB: 5/05/07 ILR# 271061

Kantu P5 #LL-S177344
Peruvian Georgio #LL-R215525
P496 Consuela 86 #LL-S163751

LW Black Knight #LL-R165377
GMRH Alana #LL-R243838
FJH Ebony 97 #LL-R187250

Evita is a rich brown with black accents. She acquired the fantastic ears from both her dam and sire. The dam is a colorful black and white with nice fiber and her sire, is a suri. For further information email beesongm@aol.com



Lot
28

Consignment of Larry & Judy Steffel
Hidden Creek Llama Ranch, Evergreen, CO

HCLR Holy Smoke

Female DOB: 8/17/07 ILR# 271080

Peruvian Firebolt
Peruvian Firemaker
Peruvian White Out

Don Divo
SSRMT Diva Las Vegas
LW Show Girl

Holy Smoke has a beautiful silky fleece of tan, gray and white. She's a real sweetheart and easy to handle. Her sire is an outcross extreme suri. Her dam is a big silky girl with genetics that include Don Divo and Gucci. Holy Smoke couldn't have any better genetics and now you can have them too.



Lot
29

Consignment of Jerry & Barb McRoberts
McRoberts Game Farm, Gurley, NE

MGF Calypso Cay

Female DOB: 9/01/06 ILR# 270944

Argentine Don Zunca #LL-S190616
MGF Up To Snuff #LL-R254966
MGF Captiva #LL-R203523

Rebano Escondido Sergio #LL-R206761
MGF Calypso #LL-R254316
MGF Andria Doria #LL-R60938

Calypso Cay is a tall stretchy dark suri. Her dam, Calypso, is from the Rebano Escondido line. Her sire, Up To Snuff, whom we lost...was one of our best Don Zunca sons....with incredible black and white silky fiber. Cay's unique pedigree makes her very desirable. Check out our website for more family photos. www.mcrobertsgamefarm.com



Consignment of Sally & Jeff Rucker
Stage Stop Llamas, Florissant, CO

El April ABSR

Bred Female DOB: 4/24/99 ILR# 212628
Service Sire: Snazzy Breeding Date: 11/05/07

Peruvian Apuesto B1005
El Mercado
Celestina

SR Two Spot
SR Cinnaspot
SR Cinnamon



I am really going to miss April. She is such a sweet girl, great mom and producer of keeper babies. I am keeping last year's son for a stud, a daughter and a granddaughter in my herd. She is bred to a full Chilean silky appaloosa Napoleon son. He has the fiber that Andy Tillman specialized in, as well as being big and heavy boned.



Consignment of Lew & Jennifer McGinnis
Superior Farms, Yukon, OK

Maximum Occupancy

Male DOB: 4/09/07 ILR# 270790

Peruvian Keno PC-1 #LL-S190453
WSL Ekati #LL-R235691
Saltspring Kiri Te Kanawa #LL-R172841

Lux #LL-R153015
6P Autumn (Can) #LL-R239018
PME Princess Tuscany #LL-R239017



MAXX is a large, correct Suri boy with incredible fiber. Not only is he full of color, he has unbelievable luster as well. At sale time he will be only a year old and will still have a long show career ahead of him before you will want to put him into your breeding program. He is out of our show stopping herdsire EKATI! We proudly offer Maxx to you as one option in our Buyer's Choice.



Consignment of Lew & Jennifer McGinnis
Superior Farms, Yukon, OK

Lanna's Madagascar

Male DOB: 12/02/04 ILR# 266017

Kantu P5 #LL-S177344
Peruvian Doc Martin #LL-R215536
P496 Divino 111 #LL-S163773

Tuna Fish #LL-R132789
Ollilanna #LL-R212805
Lana SP02 #LL-R51302



MADAGASCAR is a colorful male out of the infamous Doc Martin. He is a large Suri male with tons of substance. He has sired a lovely black and white paint boy for us that we are keeping. We offer Madagascar to you as one option in our Buyer's Choice.





Lot
32

Consignment of Mike & Janet Wilkins
Wilkins Livestock Ranch, Geneva, NE

LW Showtime

Bred Female DOB: 12/19/94 ILR# 125856
Service Sire: Heat Wave Breeding Date: 09/07

Unknown
LW Kissam #LL-R61645
Unknown

LW Tinsel #LL-R61679

This is an opportunity you won't see very often. Showtime is out of the great Tinsel & Kissam bloodlines. She is bred to our great herd sire "Heat Wave" for a baby on 9/15/08. She will produce you a show winner.



Lot
33

Consignment of Kim & John Peters
Calypso Llamas, Lockport, IL

Calypso's Sugarplum Dream

Female DOB: 10/15/06 ILR# 272609

Peruvian Alcoa #LL-R215523
RCL Chezeray Rose #LL-R252380
Grand Slam's Shekinah #LL-R210595

Our Bolivian Twister #LL-S226285
ACM Northern Dream Girl #LL-R230561
Peruvian Virana PC-1 #LL-S190470

Sugar is a stunning young girl. Her fine suri fiber has extremely high luster and she has excellent coverage on a very sturdy frame. Sugar is 3rd generation suri on both sides of her pedigree, so she should produce suri even if bred to a fluffy stud. Her sire, Chezeray, is a gorgeous Alcoa son who's offspring are doing very well in the show ring. Her dam, who had a successful show career before becoming a mom, has produced 3 for 3 suri crias. In addition to her beauty, Sugar has a wonderful, friendly personality, always the first to greet you, and is an absolute delight!



Lot
34

Consignment of Judy Gustafson
BJ Llamas, Waverly, IL

BJL Hoodwinkie

Female DOB: 9/22/06 ILR# 268003

Range Rover #LL-R85569
CTW Wrangler #LL-R214978
Valdra #LL-R100121

MTL Snowden #LL-R192634
PLF Tootz #LL-R250434
MT VF's Violet #LL-R191448

Hoodwinkie has wonderful wool. Lots of twists and curls. She looks like she belongs in Alaska because of the long white hair that goes completely around her head. She is a show stopper. Great conformation, long stretchy neck and that wonderful wool. Her dam is PLF Tootz and her sire is CTW Wrangler.



Consignment of Gary & Mary Beeson
G & M Rolling Hills, Ozark, MO

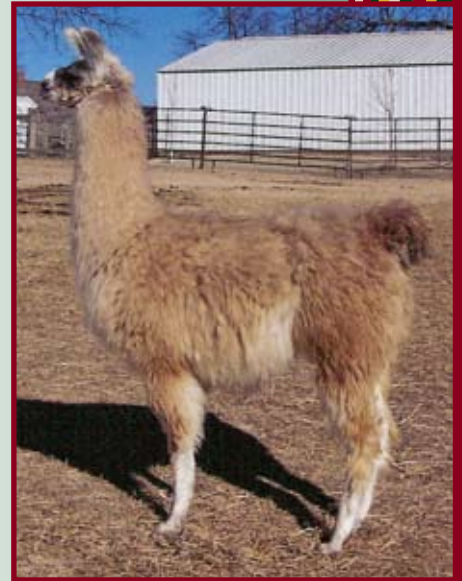
GMRH Nina

Female DOB: 3/31/07 ILR# 271058

Kantu P5
Peruvian Georgio #LL-R215525
P496 Consuela 86

Tocanao's Tocayo (ET)
GMRH Neely #LL-R228285
GNLC Keno

Nina is large, stretchy, sound and very colorful. Nina's bloodline includes a Grand National Champion, Tocanao's Tocayo (ET). Her granddam has also done extremely well in the show ring. We feel she is a definite show prospect. For further information email beesongm@aol.com.



Consignment of Rex & Dalene Reinecker
Wheatfield Llamas, Quinter, KS

Wheatfield's Angelina

Female DOB: 6/02/07 ILR# pending

White Heat
White Heat's Trilogy #LL-R233632
PVCL Consuela

The Blitz
Wheatfield's Little Angel #LL-R227280
Pumpkin Celebration

This young female has just started her show career and hopefully by sale time will have a long list of wins. She was Grand Champion at Ft. Worth! Her full sister "Wheatfield's Mariah" is a Halter Champion. Angie's sire, White Heat's Trilogy, is a Halter Champion and winner of ALSA Nationals, LFA, and Celebrity. His Get are outstanding in the show ring with many being Halter Champions. "Angie" is sure to be a great producer after her show career is complete.



Consignment of Randy Cipriano
RTC Llama Ranch, Garland, NE

Franchisca RTC

Female DOB: 9/20/07 ILR # pending

Argentine Don Zunica #LL-S190616
Argentine Fresco #LL-R233492
Argentine Moore #LL-S190676

Quick Silver RTC
Maggie May RTC
Sugar Plum RTC

Franchisca RTC will be an outstanding breeding/show llama. RTC Ranch goes back four generations on her pedigree. Franchisca carries herself with pride and will stand out in your field. She has silky fiber with a little lock. She is half Argentine and sells with our RTC Ranch guarantee. www.rtcllamaranch.com





Lot
38

Consignment of Larry & Judy Steffel
Hidden Creek Llama Ranch, Evergreen, CO

HCLR White Knight

Male DOB: 3/15/07 ILR# 211070

Chileno V Duty Free #142
Chileno Canaletto II
Chilena Blanquita R047

Newevo
FFF French Fry
DBLJ French Silk

White Knight has amazing white suri-type fiber. His dam is a silky Newevo daughter and is one of our top producers. His sire is an extreme suri that has produced on champion after another. White Knight carries the genetics for suri, for silky and for a fantastic future!



Lot
39

Consignment of Lew & Jennifer McGinnis
Superior Farms, Yukon, OK

Estancia MRLE

Female DOB: 7/07/06 ILR# 267677

GC's Chock Full 'O Nuts #LL-R227682
GC's Paydirt #LL-R256719
G.C.'s Loud & Clear #LL-R146696

Marino #LL-R180048
FFF Cristal #LL-R236759
Senorita Cristina #LL-S208927

Suri Suri Suri!....This big suri female is packed with substance, fiber and color genetics. Her suri locks are white with silver undertones that are magnificent. We offer ESTANCIA with a breeding at that time to one of our recommended "Superior Studs". Recommended herd sires are SIR E SUR-Real or EKATI.



Lot
40

Consignment of Sally & Jeff Rucker
Stage Stop Llamas, Florissant, CO

Totally Cool's Bloom On The Rose

Bred Female DOB: 6/23/00 ILR# 231081

Service Sire: Prime Plus One Breeding Date: 11/11/07

Amaretto De Temuco
Totally Cool
Nadine

Chilean LeRoy Brown
RAR Chilean A Rose Is A Rose
Kachi-Macha

This 100% Chilean female is bred to Prime Plus One. He is a full Chilean Papa Noel son who has had cria in the top of Futurities and shows around the country. I am retaining a daughter and a son from Bloom in my herd. She throws her silver color on a consistent basis.

Lot
41

Consignment of Venesa & Chris Carter
CriVen Llamas, Rogersville, MO

Keeley Charm

3 in 1 Female DOB: 4/25/00 ILR# 224596
Service Sire: TBA Breeding Date: TBA

RAR Chilean Black Jade #LL-R115221
Jade's Lusterman #LL-R182952
Whispering Hope #LL-R100129

Howard's Spooktacular #LL-R97306
Needmor's Tickle Me Pink #LL-R136608
WWW Vivid By Chardonnay #LL-R108387

Looking for a great breeding female that produces great fibered babies no matter who she is bred to? Then look at Keeley. This girl has produced 3 excellent silky fibered crias and she will have a baby by our Halter Champion, Mystic's Merlin, by sale time. Plus, we will breed her back to one of our suri males for an excellent 3 in 1 package! We are keeping her son from 2007 as he is really special. She is a no problem mama with easy breeding, births and lots of milk. For more info, please contact us at crivenllamas@aol.com



Lot
42

Consignment of Robert LaMorte & Patrick Fuller
Northwind Farm, Sawyer, MI

Baroness Likes Quiche

Female DOB: 3/04/07 ILR# 270232

Kantu P5 #LL-S177344
GC's Chock Full 'O Nuts #LL-R227682
Hannah's Bananna Nut Bread #LL-R165875

G.L.L Snow King #LL-R57248
G.C.'s Kinky Quiche #LL-R157480
CEO's Cleome #LL-R98357

"Baroness" is full sister to our multi blue ribbon winning stud, Mister Rainman. She has the genetics to produce either silky or suri crias, whichever way your breeding program dictates. She comes from great milk lines too! Grow her up and let her "crate" your next blue ribbon champion!



Lot
43

Consignment of Jerry & Barb McRoberts
McRoberts Game Farm, Gurley, NE

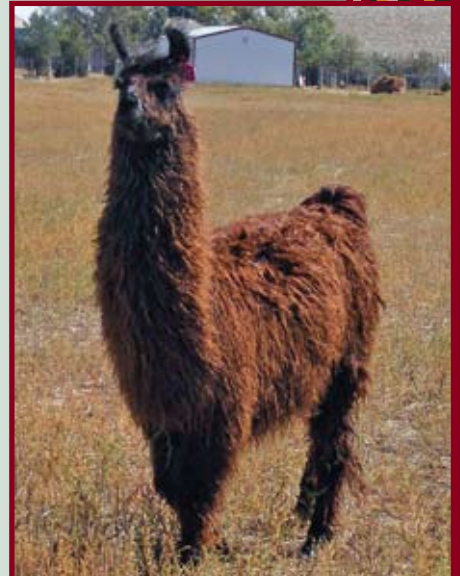
MGF Heartline

Female DOB: 4/04/06 ILR# 268977

Argentine Kobra #LL-S170213
Argentine Arica 0077 #LL-S170212

Argentine Paco #LL-S170205
MGF Queen Of Hearts #LL-R254979
MGF Brisque #LL-R137125

Heartline is a stocky $\frac{3}{4}$ Argentine female with great reddish brown fleece. Her dam, MGF Queen Of Hearts, is a beautiful paint with wonderful silky fiber. This lovely Kobra daughter has inherited the best of both parents and will make a great addition to any breeding herd. Check out our website for more family photos. www.mcrobertsgamefarm.com





Lot
44

Consignment of Gary & Mary Beeson
G & M Rolling Hills, Ozark, MO

LRL Contessa

Female DOB: 9/13/07 ILR# pending

Kantu P5
Peruvian Georgio #LL-R215525
P496 Consuela 86

Misty Moon's Centaur #LL-R85790
LRL Clarissa #LL-R184834
LRL Clarise #LL-R96425

This is a delightful young lady. We expect her to be a good producer as her dam and, she does carry the suri genes from her sire, Peruvian Georgio. For further information please contact beesongm@aol.com.



Lot
45

Consignment of Kim & John Peters
Calypso Llamas

Calypso's Black Russian

Male DOB: 4/19/07 ILR# 271903

Peruvian Vice #LL-S213516
WSL Peruvian Quicksilver #LL-R251931
P496 Fortuna 92 #LL-S163756

CCC Peruvian Captain Carson #LL-R229569
Calypso's Tequila Sunrise #LL-R261444
Kahlua N Cream #LL-R209722

Black Russian is a very stretchy ¾ Peruvian black suri male by WSL Peruvian Quicksilver out of our lovely Peruvian Captain Carson daughter, Tequila. In addition to his beauty, he has a delightful personality. He sells with a full fertility guarantee.



Lot
46

Consignment of Randy Cipriano
RTC Llama Ranch, Garland, NE

Djali

Bred Female DOB: 8/28/96 ILR# 153703
Service Sire: Argentine Fresco Breeding Date: TBA

Don Juan Quixote #LL-R53072
Senor Rojo #LL-R54754
Rosita HU03 #LL-R53070

Equinox #LL-R47235
Debutante #LL-R74282
Pilsbery's Best #LL-R48203

Big, beautiful, straight bred female with great head and ears. Splashy tri-colored female who stands very proud. She is bred to Argentine Fresco. She sells with our RTC Ranch guarantee. Give us a look at www.rtclllamaranch.com.

Lot
47

Consignment of Sally & Jeff Rucker
Stage Stop Llamas, Florissant, CO

MGF Pristine

Bred Female DOB: 3/03/98 ILR# 203482
Service Sire: Silver Enchantor Breeding Date: 4/01/08

Chilean LeRoy Brown
RAR Ricochet #LL-103584
Misty Chilean

Macho's Ace
MGF Vanessa #LL-60944
MGF Tess

Pristine is a Ricochet daughter whose cria live up to that fine reputation. She is bred to one of my most sought after studs, Silver Enchantor. He is a Silver Spirit son out of Art Kennel's Bunny line on the dam's side. All of his cria to date have been silver. Pristine is a good mother and a sweetheart to handle.



Lot
48

Consignment of Larry & Judy Steffel
Hidden Creek Llama Ranch, Evergreen, CO

HCLR Belinda

Female DOB: 3/07/07 ILR# 271069

Chileno V Duty Free #142
Chileno Canaletto II
Chilena Blanquita # R047

Chileno Chasca
Chilena Illacoyo Chascona #22
Chilena Colegiala

Belinda is a flashy full Chilean silky female. Her dam is a heavy woolled Chasca daughter, an excellent milker and easy birther. Her sire is an extreme suri that has produced numerous champions. So if you're looking for a full Chilean with a great genetic pedigree this girl is for you.



Lot
49

Consignment of Lew & Jennifer McGinnis
Superior Farms, Yukon, OK

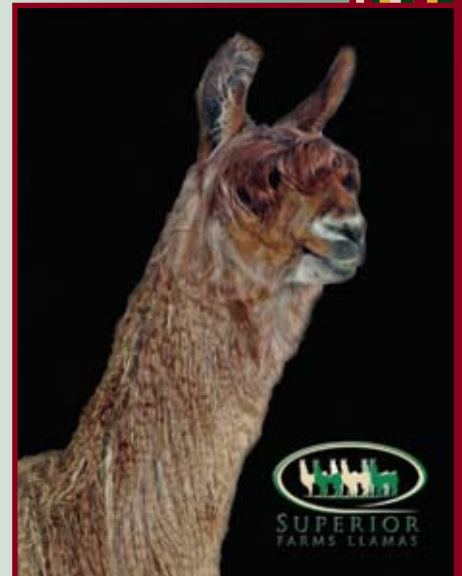
C'est La Vie's Deja-Vu

Female DOB: 9/30/06 ILR# 267819

Chileno Cachete #LL-S159665
Chileno Siricache #LL-R223157
Chilena Sirina #029 #LL-L200554

HCLA Bolivian Bullet (Can) #LL-S221023
HCLA Bolivian C'est La Vie #LL-R221818
HCLA Bolivian Cameo (Can) #LL-R221816

Check her out! This red and white suri girl is full of color and pizzazz! She has great coverage as well as luster. At sale time DEJA-VU will still have a show career ahead of her before she will be able to enter your breeding program in the fall of 2008. We offer her with a breeding at that time to one of our recommended "Superior Studs." Recommended herd sires are EKATI or EASY MONEY.





Consignment of Mike & Janet Wilkins and Mike & Sandra Bradford
Wilkins Livestock, Geneva, NE

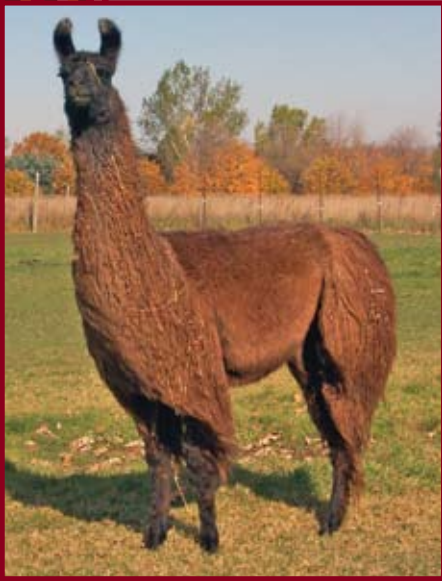
LW Maui

Bred Female DOB: 5/25/97 ILR# 172220
Service Sire: GNLC Starbucks Breeding Date: 8/24/07

Macho Camacho #LL-47836
Macho Macho #LL-70235
Chi Chi PL #LL-46760

The Fiduciary #LL-52000
Mirabelle #LL-56770
Belladonna #LL-50001

LW Maui is one of the most special females with amazing bloodlines you can count on. She goes back to the great Macho Macho who is out of Macho Comacho. This is getting to be a very rare foundation line. Her dam "Mirabelle" was also a great producer of show winners. We have bred her to our herdsire GNLC Starbucks for a July cria. Her last cria was in July 07 and was a female.



Consignment of Terri Strouse & Susan Gray
New Ventures, LLC, Caledonia, MI

Nuts About Ophelia

Bred Female DOB: 5/12/05 ILR# 261506
Service Sire: M.R.S. Night Vision Breeding Date: TBA

Kantu P5 #LL-S177344
GC's Chock Full 'O Nuts #LL-R227682
Hannah's Bananna Nut Bread #LL-R165875

Eliseo De Temuco #LL-R159578
Klein Himmels' Octavia #LL-R237359
Klein Himmels' Cami #LL-R739553

Stretchy red suri female whose sire stands alone in greatness, "Chock Full O' Nuts. Dam lineage goes back to Senor Bolivia, one of the great sires of his time. Her ancestry has many of the outstanding champion bloodlines. Also registered & keured with the Suri Llama Registry (SLA). Second Premium. DNA tested and microchipped. ALSA champion and Grand in walking fleece. One of the few "Chucky" girls available in today's industry. If you want to add exclusive genetics to your herd we will breed her to M.R.S. Night Vision as an extra bonus. Take it up a notch with this offering. "Truly the Cartier of Suri Excellence." www.newventuressuris.com



Consignment of Larry Kisner
Catawissa Llamas, Catawissa, MO

SLM Double Delight

3 in 1 Female DOB: 4/24/02 ILR# 264304
Service Sire: Navarro Breeding Date: TBA

Padrino
5K Mandlebrot
5K High Fidelity

Everest
MW Unique
Fortunique



Keep your seats and have a look at Double Delight! She will have her very first baby at side, due March 18, 2007. She already shows signs of being a good milker. The sire of the baby at her side is CTW Kingfish, who is also the sire of show ring winner, Party Girl. She will be rebred to Navarro, our full Peruvian suri herdsire. His first cria, Starlite, is spectacular, so get in line for a great package. Fully guaranteed to be healthy and reproductively sound.



Silver Moon Chiri Alluro and owner Marilyn Milton - Mingling with folks during the social hour

When nearly 200 llama and alpaca owners and breeders came together in March for the 20th annual Willamette Valley Llama Foundation (WVLF) Banquet and Stud Service Auction in Wilsonville, Oregon, the results were both exciting and wonderfully successful. Llamas and alpacas were the winners. With \$24,912 total auction

Oregon Auction Raises Nearly \$25,000 for Camelid Medical Research

by Melinda Van Bossuyt

income, camelid health research will be well funded this year.

During the silent auction and raffle social hour before dinner studs and their owners mingled with auction attendees in the hotel foyer. To celebrate the 20th anniversary of the WVLF Banquet and Stud Service Auction, a slide program showing all of the studs whose services were auctioned through the years was presented. It was noted that in 20 years of holding the event, a total of more than \$400,000 has been raised for camelid research.

The oral auction started up after dinner with a parade of the three alpaca and nine llama studs being offered

for stud service in the auction. It was the first time members of the alpaca community contributed alpaca studs for stud service to the oral auction. Stud service was donated from as far away as Arizona by Toni and Bob Skousen of Goose Valley Llamas. Other studs came from all over Oregon and Washington

GlenPfefferkornremindedeveryone why they were there. "It's about money, money, money for research!" he said as he encouraged folks to be generous. Dan Milton led the auction while Bob Wynia described each stud and provided colorful commentary.

Continued on page 36...

Llama Work Station



Also Available:
Stalling Mats
Incredible Feed Crates
Galvanized steel
light-wt. panels

Please call for current pricing.

The Best Chute at the Best Price.

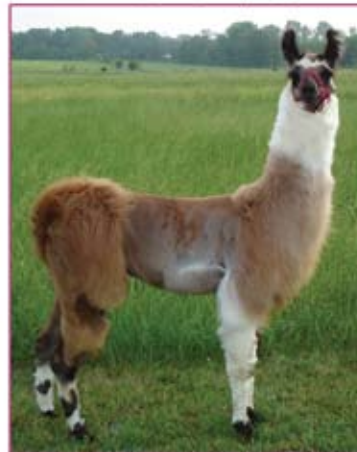
Discount breeding coupon accompanies the purchase

- Designed for the safe and easy vetting of your llama
- 2 inch diameter steel and double powder coated
- Side stabilizers prevent tipping over
- Plenty of eyelets for tying, cross tying hanging hay bag, or belly bands
- Horizontal/vertical bars easily repositioned while animal is in chute
- Heavy expanded metal slip resistant flooring
- Folds down to a compact unit for transportation or storage
- Completely disassembles for easier handling

Call or email to reserve one or for more information:

610 582-9051 or carol@buckhollowllamas.com

Our boys are looking for some llama lovin'...



Cria-ting Solid Foundations

Show • Breeding • Fiber
Pack • Cart • Pets

Owned & operated by
Rebecca and Roxanna Wood
1680 Canadaville Loop • Eads, TN 38028
901-466-9183 • 901-233-7331 cell
www.roxywoodfarms.com



Book your shot at
love today!

Roxywood Farms

Visitors Always
Welcome!!

Subscribe to...
RARE BREEDS JOURNAL,
*"The Digest of the Alternative
 Livestock Industry"*



Informative articles about unique, minor and rare breeds and species. Learn to diversify while teaching family life's values and supplementing income.

YES, I'd like to subscribe to
 RARE BREEDS JOURNAL,
 A bimonthly, color, magazine.

- 1 yr. \$30. 2 yr. \$55.
 3 yr. \$75. Foreign \$55.

Name _____

Address _____

City _____

State _____ Zip _____

RARE BREEDS JOURNAL
 PO Box 66, Crawford, NE 69339
 308-665-1431 rarebreed@bbc.net
 www.rarebreedsjournal.com
 Visa/MC/Discover Accepted

...Continued from page 35



*El Nino's Accoyo Lancelot
 Top selling alpaca stud service*

Prices for stud services were strong with vigorous bidding from both those present and a contingent of phone bidders. The top auction price was \$2,500 paid by Connie Tallent of Tallmon's Hidden Oaks Llama Ranch in Estacada, Oregon for stud service to Silver Moon Chiri Alluro owned by Dan and Marilyn Milton of Highland Llamas in Jacksonville, Oregon. The top auction price for an alpaca stud service was \$1,550 for El Nino's

Accoyo Lancelot owned by Marie and Chuck Smith of Stone Mist Alpacas in Sherwood, Oregon and Mark and Robin Widmer of Pleasant Hill Alpacas also of Sherwood, Oregon. The buyer was Pamela MacLellan of Vineyard View Camelid Farms in Hillsboro, Oregon.

The average llama stud service price was one of the highest in the 20 year history of the event at \$1,317. The average alpaca stud service price was \$1,183. In all, the 12 studs raised a total of \$15,400 for camelid research. The other 150 items contributed by at least 45 different donors for the oral auction, silent auction, centerpiece auction, and raffle brought in an additional \$9,512 in contributions to camelid research.

Event chair, Peggy Gresham, credits the success of the auction to the super team of volunteers supporting the effort. She says, "I'm so proud to have been a part of this outstanding 20th anniversary event. Everyone participating helped to make it very special by donating and then raising their hands for this cause." Special thanks goes to Larry Raley who, according to Justin Timm of Frog Pond Llamas and Suri Alpacas, "not only did an outstanding job of getting an incredible lineup of both llama and alpaca studs, but an even better job of promoting and gathering buyers."

lamalink.com

is the only
 marketing partner
 your ranch will need



Last year Willamette Alpaca Breeders Association (WABA) matched the proceeds from the 2007 WVLF Banquet and Stud Service Auction which made it possible for all the worthy research proposals submitted for 2007 to be funded. Quality Llama and Alpaca Products also contributed funds from their Christmas in August event. Research projects funded are described on the WVLF website www.wvlf.net.

MOONSHADOW FARM LLAMAS

Discover the wonder of llamas... bring peace and joy into your life.



Heidi Heuser
 and
 Jim Foster
 Vermontville, MI
 517 852 0544

www.moonshadowllamas.com
 hh@moonshadowllamas.com

Dreamweaver Creations Fiber Processing Mill

From Raw Fleece To Finished Product • No Minimums

We Offer: washing • carding • spinning & finished items from your fiber

Processing your fiber since 2000

Call for a brochure

W4289 Hwy 98 • Loyal, WI 54446
www.dreamweavercreationswi.com
 Dreamweavercreations@gmail.com
608-343-3878





COPPER NUTRITION IN CAMELIDS – PART 1

Robert J. Van Saun, DVM, MS, PhD
*Department of Veterinary
and Biomedical Sciences
Penn State University*

Copper (Cu) is another one of the essential microminerals required by llamas and alpacas as well as all other animals and people to help maintain normal body functions. Similar to the discussion in a previous column regarding selenium, Cu nutrition is a double-edged sword being associated with both deficiency and toxicity disease concerns. Although all microminerals are of importance, Cu is receiving more attention as a result of the potential toxicity concerns with llamas and alpacas. There is evidence of increasing Cu content in forages and feeding with other copper-containing supplements (pellets and mineral) may predispose animals to a greater risk for toxicity problems. The objective of this column is to provide an overview of Cu nutrition by describing biologic functions and associated deficiency and toxicity disease conditions in llamas and alpacas. A subsequent column will address Cu requirements, assessment of Cu status, and dietary supplementation practices, especially concerns relative to toxicity risks.

Biological Roles

Essentiality of Cu in animals was not discovered until 1928, though it had been discovered in animal and plant tissues much earlier. Copper performs a number of essential roles in the body as a component of various proteins (e.g., metallo-enzymes) that require Cu to sustain their biologic functions. Some examples of Cu metallo-enzymes include ceruloplasmin, tyrosinase, lysyl oxidase, cytochrome C oxidase, and superoxide dismutase. Through the action of these metallo-enzymes, Cu has been associated with iron regulation and red blood cell function, cellular respiration, bone and connective tissue formation, hair pigmentation, nerve tissue and cardiac development, and immune function.

Ceruloplasmin is a blood protein with multiple functions and contains seven copper atoms, thus accounting for a majority of copper in blood. Ceruloplasmin converts stored iron into a form that can be incorporated into hemoglobin, the pigment responsible for oxygen transport in red blood cells. Ceruloplasmin also plays an important role in the non-specific immune response and its blood concentration will be elevated in response to an infectious agent. Functional activity of most cell

Continued on page 38...

First Annual!
American Youth Jamboree
A Don't Miss Event! - Make Your Plans Now!

**ALSA Youth & 4-H Youth
National Shows & Conference**
Premiums, Ribbons, Prizes, Fun!
Showing Seminars * Health Care Workshops
Five Individual Fiber Workshops
Two Youth Shows - 4-H & ALSA
Youth Fiber Show

**Challenges: Skillathon, Llama Jeopardy,
Farmer Olympics, Sweepstakes Obstacle,
Poster Contest, Versatility Award
Fun Street Dance, Cook Outs & Campfire**

June 27, 28, 29, 2008
Noblesville, Indiana (by Indpls.)
www.youthjamboree.net

Holy Cow! **HAVE YOU TRIED Holy Tea?!**

www.Holy-Tea-Time.com
1-888-887-4654

Drink the tea and see. Holy Tea is your key to better health.

Experience FREQUENSEA™ MOTHER NATURE'S MILK™

FrequenSea Wellness Benefits:

- Nourishes the Brain, Eyes and Nerves
- Supports Cardiovascular Health
- Supports Healthy Cholesterol Levels
- Supports Healthy Blood Sugar Levels
- Supports a Healthy Liver
- Supports Better Sleep

More Information and Orders:

WWW.TheOceansGarden.com &

www.MotherNatureHeals.com

Phone orders: 1-888-887-4654



– Amazing Marine Phytoplankton Super Food from The Ocean's Garden.

FrequenSea™ contains whole food phytoplankton harvested on a pristine sea farm in the Pacific Northwest. Marine phytoplankton is the first plant on earth and contains 400 times the energy of any known plant. Whales live on it. It is a major source of the earth's oxygen supply. The nutritional analysis of marine phytoplankton is second to none.

These statements have not been evaluated by the FDA. This product is not intended to treat, diagnose, cure or prevent any disease.

...Continued from page 37

types responsible for the various immune system responses are influenced by Cu through superoxide dismutase activity.

Of interest to llama and alpaca owners, Cu plays an important role in fleece coloration and quality. Tyrosinase (polyphenyl oxidase) is the enzyme responsible for the formation of melanin, a pigment responsible for hair and skin coloration. Hair or fleece would appear lighter in color or “bleached out” without the presence of melanin. Cross linkages of disulfide groups within the keratin structure of hair provide the physical properties of fleece and are dependent upon Cu. Wool from sheep with copper deficiency are described as having “steely wool” where the crimp has been lost and the fiber is straight.

Normal development of bone and connective tissue is dependent upon the copper-dependent enzyme lysyl oxidase. This enzyme is responsible for modifying specific amino acids within the collagen protein structure that facilitates cross

linkages between collagen fibers within connective tissue. These cross linkages impart properties of rigidity or elasticity to the collagen structure. Rigid connective tissue provides the scaffolding for mineralization in the development of bone. Elastic properties of collagen are seen in the large blood vessels such as the aorta, which must withstand wide fluctuations in pressure in circulating blood.

The cell's ability to generate energy through the transfer of electrons to the final receptor oxygen to form water is one of the functions of cytochrome C oxidase. Integrity of the nervous system is dependent upon the specialized phospholipid coating (myelin) around nerve fibers facilitating transmission of nerve signals. Myelin formation in the brain and spinal cord is related to cytochrome C oxidase activity. Besides the structural effects on nervous tissue, Cu is linked to nervous and cardiac tissue communications through its effect on production of neurotransmitters

and heart muscle fiber (myofibril) development. Both cytochrome C oxidase and dopamine-β-monooxygenase are responsible for these biologic functions of Cu.

Deficiency Diseases

With the number of biological functions attributed to Cu, a wide range of diseases has been associated with a deficient nutrient status. A most common Cu deficiency disease that occurs in a wide range of animals is anemia or a lack of red blood cells. Anemia can be characterized by the size and pigment (hemoglobin) content of red blood cells. In other ruminants, Cu deficiency can induce a macrocytic (large cell size), hypochromic (low hemoglobin) anemia due to low ceruloplasmin activity. Anemia and poor condition attributed to Cu deficiency has been reported in two llamas (14 and 23 months of age) (Andrews and Cox, 1997). Although anemia can result from a number of nutritional and non-nutritional insults, affected llamas in this

report had low blood Cu concentrations (3.8 - 8.3 $\mu\text{g/dL}$) and responded to Cu supplementation with resulting increased blood Cu concentrations (66.7 - 82.6 $\mu\text{g/dL}$). These Cu concentrations are consistent with recognized Cu deficiency in other species and are below reported values (mean 35.6, range 16.5 - 55.3 $\mu\text{g/dL}$) for healthy llamas (Smith et al., 1998).

Copper deficiency has been associated with neurologic degeneration in sheep as a result of abnormal myelin formation with resulting disease signs of muscular weakness of the legs and inability to walk normally (ataxia). There have been three different published reports of possible association between Cu deficiency and neurologic disease and ataxia in llamas and alpacas (Smith, 1989; Palmer et al., 1980; Morgan, 1992). Presenting signs in the affected animals included hind limb ataxia, paralysis or head tremors. Blood Cu concentrations of the affected animals in these reports were not in the deficient range; however, blood Cu is not always a reliable measure of Cu status. Response to Cu supplementation in these cases was not well defined, thus questioning whether or not this truly was a Cu deficiency disease process. In one of the reports, a 6-mo old llama was described with progressive paralysis and liver and kidney Cu concentrations were found to be deficient. More evidence is needed to determine if there is a role for Cu deficiency in neurologic disease of camelids, similar to that described for sheep.

Other potential Cu-deficiency diseases have not been reported in llamas and alpacas, though there is no indication that there is potential for such diseases. One might surmise there is the possibility for achromotrichia (loss of fleece pigmentation) and fleece structural changes in llamas and alpacas similar to what is seen in sheep and other species with Cu deficiency. Bone development abnormalities (similar to rickets), blood vessel ruptures, and heart degeneration are other recognized Cu deficiency diseases, but these are not seen in all species. Copper deficient diseases will vary among animal species.

Up to this point, the disease conditions discussed are classified as clinical disease syndromes. Clinical disease is characterized as the "classical" disease processes associated with a specific nutrient. In contrast to clinical disease is what is termed subclinical disease. Subclinical disease is described as non-specific consequences of a nutrient being marginally deficient or toxic. Subclinical Cu deficiency is associated with impaired immune response and greater susceptibility to disease, reduced reproductive fertility, and poor growth or lactation. Clinical disease is more readily identified, but is not near as prevalent as subclinical disease. With difficulties in assessing Cu status using blood concentrations (to be discussed in part 2), subclinical disease becomes a difficult process to diagnose.

Toxicity Disease

As I discussed in a previous column in addressing selenium, toxicity resulting from excessive intake of a trace mineral can also produce disease problems. Sheep are well known to be extremely sensitive to excess dietary Cu (>10 mg/kg); however, camelids do not seem to be as keenly sensitive but are prone to toxicity. At least four published case studies have reported Cu toxicity or suspected toxicity in llamas and alpacas (Junge and Thornburg, 1989; Mullaney et al., 1996; Weaver et al., 1999; Carmalt et al., 2001). I have been associated with a number of clinical situations in which Cu toxicity was highly suspected and I am aware of other cases seen by other veterinarians. It would seem that Cu toxicity is a disease of greater concern for llamas and alpacas. The challenge is being able to recognize disease risk early and initiate appropriate dietary changes as there is no treatment once the disease process has started.

Copper toxicity is the result of the highly reactive nature of the Cu ion when not protectively bound in tissues or blood. Copper like most minerals is a strong oxidizing agent that can damage cellular membranes and proteins. In most situations Cu toxicity is a progressive disease process where excess dietary Cu

accumulates in the liver until it becomes saturated. The liver is the primary mineral storage organ of the body and contains special protein molecules capable of binding minerals and keeping them isolated from doing any damage to the surrounding tissues. Stored Cu is inefficiently excreted through bile produced in the liver and transported to the intestinal tract to be lost in fecal matter. The ability to excrete Cu is species dependent and accounts for the observed differences in sensitivity to Cu toxicity. Once the liver has become saturated with stored Cu, excess will spill out into the liver and blood wrecking oxidative havoc.

Clinical Cu toxicity in sheep is characterized by massive breakage of red blood cells (hemolysis) due to oxidative damage from the Cu ion released into the bloodstream. With hemolysis there is leakage of free hemoglobin into the blood (hemoglobinemia) and urine (hemoglobinuria). Hemoglobin in urine will induce damage to the kidneys. The hemolytic crisis stage of the disease is nearly always fatal. The disease process is different in llamas and alpacas as the "hemolytic crisis" has not been reported or seen in field cases. The common theme in llama and alpaca Cu toxicity cases is the documentation of severe and widespread degenerative changes (necrosis) in the liver. This is a different process than hepatic lipidosis (fatty liver). Liver necrosis may or may not be associated with elevated blood enzyme activities assessing liver function. Affected llamas and alpacas will have highly elevated blood (>200 $\mu\text{g/dL}$) and liver (>600 $\mu\text{g/g}$ dry weight) Cu concentrations as well as elevated kidney Cu concentrations.

Typically blood and kidney Cu concentrations are not highly elevated until the final initiation of the disease process; therefore they may not be useful in diagnosing potential risk. Additionally kidney Cu concentrations are only determined in animals that have died. The difficulty in dealing with this disease is that animals may only show minimal signs of poor doing prior to the final

Continued on page 40...

HEALTHYPETNET
Life's Abundance
 Premium Health Food
 For Puppies & Adult Dogs

- **100% Complete and Balanced Nutrition**
- **No By-products**
- **No Artificial Colors**
- **No Chemical Preservatives**
- **Recommended by Veterinarians**

Healthy Goodness of a Home Cooked Nutritious Meal. Life's Abundance® is balanced and blended using only fresh and wholesome, healthy ingredients such as premium all-natural chicken and top quality fish along with fresh from the farm fruit, vegetables and quality food products. Life's Abundance® also contains a superior blend of vitamins, minerals, and antioxidants and contains no artificial flavors, colors, sugars, or chemical preservatives.

Life's Abundance® Dog Food provides 100% complete nutrition in accordance with the Association of American Feed Control Officials (AAFCO) feed protocols.

**Phone Orders:
 1-888-887-4654**

Have a cat?
 Life's Abundance® has
 healthy food for cats too!



Online orders: www.BestFurryFriend.com

...Continued from page 39

demise. Stress factors or previous liver disease may precipitate the disease.

Key to understanding and preventing Cu toxicosis is nutritional management practices. Based on these published reports and the documentation of dietary factors, llamas and alpacas are seemingly prone to Cu toxicity when fed diets with greater than 20 mg/kg (ppm) total Cu and a high ratio (16:1) of Cu to molybdenum (Mo). Molybdenum is a trace mineral that plays an important role in dietary Cu availability. My next column will address issues of Cu availability, requirements, and feeding practices to prevent these disease issues.

Cited References:

Carmalt JL, Baptiste KE, Blakley B. Suspect copper toxicity in an alpaca. *Can. Vet. J.* 42:554-556, 2001.

Junge RE, Thornburg L. Copper poisoning in four llamas. *J. Am. Vet. Med. Assoc.* 195(7):987-989, 1989.

Morgan KL. Ataxia and head tremor in an alpaca (*Lama pacos*). *Vet. Rec* 131:216-217, 1992.

Mullaney TP, Slanker MR, Fitzgerald SD, Elliott MW, Braselton WE, Main KE. Copper toxicosis in llamas. In: *Proc. Am. Assoc. Vet. Lab. Diag.* p. 36 (Abstract), 1996.

Palmer AC, Blakemore WF, O'Sullivan B, Ashton DG, Scott WA. Ataxia and spinal cord degeneration in llama, wildebeeste and camel. *Vet. Rec.* 107:10-11. 1980.

Smith JA. Noninfectious diseases, metabolic diseases, toxicities, and neoplastic diseases of South American camelids. *Vet. Clinics N.A.:Food Anim. Pract.* 5(1):101-143, 1989.

Smith BB, Van Saun RJ, Reed PJ, Craig AM, Youngberg A. Blood mineral and vitamin E concentrations in llamas. *Am. J. Vet. Res.* 59(8):1063-1070, 1998.

Weaver DM, Tyler JW, Marion RS, Casteel SW, Loiacono CM, Turk

JR. Subclinical copper accumulation in llamas. *Can. Vet. J.* 40:422-424, 1999.

Resource Information:

Underwood EJ, Suttle NF. *The Mineral Nutrition of Livestock*, 3rd ed., CABI Publishing: New York, NY, 2001.

McDowell LR. *Minerals in Animal and Human Nutrition*, Academic Press: San Diego, CA, 1992.

NRC. *Mineral Tolerances of Domestic Animals*, 2nd rev. ed., National Academy Press: Washington, DC, 2005.

NEED Advise?
 Dr. Van Saun is answering
 your lama nutrition questions!
 Submit your questions to
editor@lamalink.com



A cute little hat will help to desensitize your cria.

"BACK TO THE BASICS"

by Jennifer Franks and Meagan Cyrus

Hello everyone!

This is a great time to prepare for the upcoming summer shows. If you have decided to train a new animal for this year, any fall babies at your farm will make great choices to begin training. The first step in beginning to work with your animal is to halter train it. When you first begin to work with an untrained animal, the most important thing you should try to accomplish is trust. If your llama or alpaca does not trust you, you probably won't be able to accomplish much. Since we still have a while before the spring shows start again, the best thing you can do to 'stay in touch' with your animal is just to take frequent walks. These walks can be down the road, through the woods, or even just in the front lawn or around the barn. This helps you to further your trust with your llama or alpaca. Even though this may sound pointless, it really helps. This lets your animal know that you haven't completely forgotten about him. Also, doing things, like showing his teeth, handling his legs and feet, or putting a cute hat on him, provides a variety of simple obstacles that keep you and your llama or alpaca sharp.

If you need help learning to halter train your cria, you can

follow these hints. The first step to start halter training your baby is to halter both the mother and the new baby. The first couple of times you take him out of the pasture, you should just put the halter on the baby, not the lead rope. (Don't worry; the baby is usually too attached to mom to run away!)



Baby is more comfortable with Mom along.

Take both llamas out of their pen. You should probably have a friend help you the first few times, in case you need help. Just let the baby walk freely around you and mom and investigate his new surroundings. The cria may just stand still with his nose to the ground; he is probably hoping the halter will just fall off. If this is the case, allow him to do this for a while; eventually he will begin to walk around.

After you feel he is somewhat comfortable with the halter, put the lead rope on him and encourage the cria to take a few steps. But be sure not to drag him around the barn. Eventually he will realize that

if he steps forward in response to a gentle tug, the tugging pressure will go away. Continue this practice at least a couple times per week until he begins to feel comfortable with both the halter and lead rope. Then, begin to take both mom and baby for short walks. Practice both walking and standing. You should keep your training sessions short - a maximum of 20 minutes would be good.

After the first few walks, begin only taking out the baby to help encourage his independence. With the trust



After a short time, baby will look forward to the adventures on his walks.

you have developed with your cria, he will probably look forward to his adventurous walks with you.

We hope that these hints help you begin to build a strong relationship with your llama or alpaca.

Jen & Meg

Hey Kids!

KID'S KORNER

Hey Kids! Do you have an adventure for Lucky the Llama? Here is your chance to be a guest cartoonist for LamaLink.com. With permission from your parents, simply logon to LamaLink.com click on Kid's Korner and download the template. Draw your idea and mail it to:

LamaLink.com
470 Riverside Road
Kalispell, MT 59901.

Then be sure to pick up the next issue of LamaLink.com to see if Lucky is on your adventure!

Name Jacob Laraway
Age 7
Tell us something about you:
I am good at writing



The Adventures of **Lucky the Llama**



WHERE TO BE

- **May 2-4, 2008!! Millennium Magic is back!!**
You will find the same AWESOME llama show, Breeder's Futurity and wonderful delicious dinner - filled with door prizes!! A fun weekend for all!! Contact Tami Lash (517)467-2709, Uniqueanimal@aol.com, and stay tuned to www.LashesUniqueAnimals.com for all needed show forms!
- **May 3-4, 2008 Badgerland Sweepstakes and ALSA Show Jefferson County Fair Grounds Jefferson, Wisconsin**
Futurity, ALSA Show and Youth judging Beautiful fair grounds – Easy to get to. Contact: Barb Parsons – theparsons@prodigy.net
- **May 3 -4, 2008 Ozark Llama Classic Sale and Show, NEW LOCATION, Sedalia, MO**
Sale May 3, 2008, auctioneer, Darrell Anderson, double show May 4, 2008. Superior Farms has donated an exclusive outside breeding to Lucchero for auction at the sale. All proceeds for this breeding will be split equally between Best Male and Best Female at Sunday's show. Over \$10,000 in premiums will be offered. Come join us and we can "Show Me the Money". Contact Larry Kisner, LKLLAMAS@aol.com, Mary Beeson, beesongm@aol.com or Steve Smith, llamatail@aol.com
- **May 3rd-4th, 2008 Cascade Llama Sale Featuring a Select Alpaca Sale**
99 Quality llamas & 52 quality alpacas at auction. Please join us for the 2nd annual Cascade Llama Sale, and our first ever Select Alpaca Sale. 151 quality auction lots from all over the USA and Western Canada. Lots of FUN, networking opportunities, and seminars. Be sure to not miss this unique event!
- **May 3-4, 2008 Millennium Magic Lenawee County Fairgrounds, Adrian, MI Open Double Llama Show**
Breeder's Futurity Llama Sale of 20 llamas to be sold right before our Saturday evening fellowship dinner. Official judges: Beth Myers and Terry Duespohl The open shows and futurity will utilize the ILR Show Manager Software and all ILR points will be tracked for ILR members and ILR llamas. Show contact: Tami Lash (517)467-2709 Uniqueanimal@aol.com Show forms can be found on www.LashesUniqueAnimals.com
- **May 4, 2008 – Alpaca Heritage Budget Caper Show (AOBA Certified) in Ringoes, NJ.**
The ABC show is affordable for exhibitors, is one-day only, and caters to newer breeders who may not have shown before. We want to help you learn the ropes in a friendly, low-stress atmosphere. Don't worry if you have not shown in a halter show before -- we'll walk you through it. We only take 99 alpacas so sign up early. Last year, this show sold out before the entry deadline! For more information as well as registration forms, please go to www.AlpacaHeritage.com or call Ingrid Wood at 609-261-0696.
- **May 10-11, 2008 - Llama Magic, Lake Elmo, MN**
Held at the Washington County Fairgrounds Mother's Day weekend, Llama Magic is the oldest and largest private treaty sale of llamas and alpacas in the Midwest. Also llama show, fleece contest, free seminars and wide array of vendors. Contact Sheila Fugina at bsfugina@presenter.com or 715-246-5837, or visit www.llamamagic.com.
- **May 17 & 18, 2008 Indy Open 400 & 500 ALSA Level III Show**
Double Judged - Double Cash Premiums, Noblesville, IN www.shagbarkridge.com/indy.html
- **May 17-18, 2008. OPEN BARN at Buck Hollow Llamas, Inc. in Birdsboro, PA.**
Come see our line-up of champion studs and their offspring. Pick up a chute or panels (call in advance for availability). Come learn about llamas. Contact: carol@buckhollowllamas.com or 610 582-9051.
- **May 24, 2008 "Techniques for Dyeing Skeins and Roving"**
Presented by Vanessa Kessler Contact: Edie Benusa (608)206-0874 bbenusa@merr.com
- **May 30 - June 1, 2008 Memorial Day Weekend, White Pine, TN 5th annual Great Smoky Mountains Llama Show**
takes place at Walter State Agricultural Expo Center. This is a beautiful site in the foothills of the Smokies with a temperature-controlled arena that seats 2000 persons and large 10 x 12 stalls with sliding doors. Food and weather is outstanding! For more information, contact Helen Farley at farley42@tds.net.
- **May 30 - June 1, 2008 The Great Smoky Mountains Llama Show.**
Come join the greatest show in Tennessee. Food, fun, and friends are all here for your enjoyment. Showcase your animals in the beautiful temperature controlled arena in White Pine, TN and feast on mouth watering food all weekend long. This is a Level II ALSA show with SSLA members eligible for SSLA Sweepstakes points. Contact Helen Farley at farley42@tds.net or call 865-922-5844 for a show catalog.
- **May 31st and June 1st (not Memorial Weekend) WNY Llama & Fiber Classic at The Fairgrounds in Hamburg, NY**
For more information check out our website www.the-fairgrounds.com/wny_llama_fiber_classic.php or give us a call in the office 716-649-3900 ext. 404. Check out the ALSA sanctioned Llama Show, and watch as llamas are shown by their owners for prizes and premiums. There will also be a Fiber Festival, where you can purchase products made from the finest of natural fibers including yarn, hats, scarves and more... You will also find raw fiber for sale too; great for making your own handmade gifts!
- **June 7, 2008 "Beginning Wet Felting"**
Presented by Jarka Sobiskova contact: Edie Benusa (608)206-0874 bbenusa@merr.com
- **June 7-8, 2008 Gentle Spirit Clinic with Cathy Spalding**
Clinic location: 1470 Meadowvale Lane, Santa Ynez, CA 93460 For more information and registration please contact Kelley Lucia/Pacific Breeze Alpacas (805)717-0046
- **June 8, 2008 – Alpaca Heritage Fiber Fiesta at the Springfield Veterans Memorial Park in Springfield, NJ.**
Alpaca breeders as well as spinners, knitters, felters and other fiber artists are invited to visit and purchase locally produced alpaca fleeces and yarns. Free seminars and free admission to all visitors. The Fiber Fiesta also includes the Bare Naked Alpaca Show (shorn alpacas only, of course!) For more details, call Ingrid Wood at 609-261-0696 or visit us at www.AlpacaHeritage.com.
- **June 18- 22, 2008 Lama Association of North America Expo Churchill County Fairgrounds in Fallon, Nevada.**
PLTA Pack Trials on June 18, Educational Program on June 19 and 20, and Double ALSA Llama Show on June 21 and 22. Check the LANA website at www.llamainfo.org or call LANA office at 541-830-5262.

WHERE TO BE CONTINUED

- **June 27-29, 2008 Backcountry Llama Rendezvous and Drive-In at Emigrant Springs, OR.**
Lots of educational seminars about llamas and many fun things to do with them. New this year will be a guided pack trip into the southern Wallowas (Main Eagle) immediately following the weekend activities. By guided, I mean it will be led by packers experienced in this particular hike, but it is intended to be a BYOLL (bring your own llama) event, for experienced and equipped packers. Backpackers are also welcome -see firsthand what real llama packing is all about. See the website for more details and lots of pictures. <http://www.rattlesnakeridgeranch.com/> Click on Events.
- **June 28, 2008 WILD 'N' WOOLLY YOUTH SHOW Custer County Fairgrounds**
Junction Hwy 2 & 70 Broken Bow, NE Judges: Barbara Harris – Performance Geri Rutledge – Fleece Contact: Tami Schendt 308-872-2936 ptschendt@yahoo.com
- **June 27-29, 2008 All American Youth Jamboree & Shows Just outside Indpls., IN**
ALSA Youth Show, 4-H Show, Fiber Workshops, Llama Care, Youth Challenges, Seminars. Fun Party, Farmer Olympics, Cook Out & Campfire Ribbons, Premiums, & Awards Open to all youth - no qualifying information at www.youthjamboree.net
- **July 24-26th, 2008 “20th Celebration Ohio State Fair Llama-Alpaca-Fiber Show!”**
Level III, every class imaginable. Judges: Tami Lash and Terry Duespohl. Prizes, food, vendors, tee shirts, music, favors, fun, phenomenal Fiber Show, Drill Team performance. Access all information, list of classes and entry form at www.ohiostatefair.com. Deadline always June 20th. Questions: Donna Moore (740-743-1092) Held at Fairgrounds in Columbus, OH
- **July 25 & 26, 2008 - WALKABOUT VI – Hinterland’s 6th Tri-annual Llama Production Sale.**
A Stellar Selection of the finest show and breeding stock in North America. Preview: Friday, July 25th; Auction: Saturday, July 26th. Please contact Kay: (541) 549-1215, hinterlandllamas@peoplepc.com, or visit us at www.hinterlandllamas.com.
- **August 1-3, 2008 - Camelid Community 2008, Kansas City, MO**
Open to everyone in the llama and alpaca community, this annual gathering will discuss “the state of the union” of the camelid world. All llama and alpaca organizations are encouraged to send a representative to this open forum, and interested individuals also are welcome. For registration information or more details, contact Sheila Fugina at bsfugina@presenter.com or 715-246-5837.
- **August 2, 2008 Lenawee County Fair Open Llama show Lenawee County Fairgrounds, Adrian, MI**
Open Single Llama Show Official judge: Beth Myers Show contact: Tami Lash (517)467-2709, show forms available on www.LashesUniqueAnimals.com or email Uniqueanimal@aol.com
- **August 2, 2008 Lenawee County Fair Open Llama show Lenawee County Fairgrounds, Adrian, MI**
Open Single Llama Show Official judge: Beth Myers This show will utilize the ILR Show Manager Software and all ILR points will be tracked for ILR members and ILR llamas. Show contact: Tami Lash (517)467-2709 Uniqueanimal@aol.com Show forms will also be listed on www.LashesUniqueAnimals.com
- **August 23-24, 2008 NEBRASKA STATE FAIR ALSA II LLAMA SHOW State Fair Park Lincoln, NE**
Judges: Barbara Harris – Halter Harold Herbold – Performance Contact: Eunice Cernohlavek 402-475-8636 eunice@isp.com For premium book and application forms: www.statefair.org
- **September 27-28, 2008 Millennium Magic Fall Festival Lenawee County Fairgrounds, Adrian, MI**
Open Double Llama Show Saturday evening fellowship dinner Official judges: Darrell Anderson and Terry Duespohl Show contact: Tami Lash (517)467-2709, show forms available on www.LashesUniqueAnimals.com or email Uniqueanimal@aol.com
- **September 27-28, 2008 Millennium Magic Fall Festival Lenawee County Fairgrounds, Adrian, MI**
Open Double Llama Show Saturday evening fellowship dinner Official judges: Darrell Anderson and Terry Duespohl These open shows will utilize the ILR Show Manager Software and all ILR points will be tracked for ILR members and ILR llamas. Show contact: Tami Lash (517)467-2709 Uniqueanimal@aol.com Show forms will also be listed on www.LashesUniqueAnimals.com
- **Oct 3 - 4 Tulsa, OK Tulsa State Fair**
Entry forms on Tulsa State Fair website Superintendent - Brenda Foulks bfoulks74016@yahoo.com
- **October 4 & 5, 2008 – 8th Annual Alpaca Heritage Days.**
Looking for that special alpaca to add to your herd? How about some prime fiber and alpaca products? Mark your calendar now! The weekend offers private treaty sales, free seminars, and lots of shopping fun at Terhurne Orchards in Princeton, NJ. For more information including directions, go to www.AlpacaHeritage.com.
- **October 25, 2008, 9-3 Tucson Wool Festival:**
Sponsored by the Withers Ranch as a community outreach and educational awareness program on fiber animals and arts, various breeders and vendors from throughout the southwest will be demonstrating their wares from their fiber animals on the Withers ranch in Tucson, Arizona. Free booths are available. Seeking instructors for 1-2 hour classes. Contact: Kathy Withers (520)572-3758, jmarckathy@aol.com. Additional information is on the Wool Festival page of www.uniquedesignsbykathy.com.
- **November 8, 2008 – Alpaca Heritage Events presents Dr. LaRue Johnson’s Neonatal Clinic in Bordentown, NJ.**
This clinic includes 6 hours of lecture and 90 minutes of wet lab for each registrant. Topics include reproductive anatomy and physiology, breeding and pregnancy diagnosis options, gestational development, care of the pregnant dam, normal and abnormal creation, and care of the newborns as well as high risk crias. The wet lab will include diagnosing the contents of the uterus, delivery plans and cria deliveries. Cost is \$200 per person and includes lunch. For more information and to register, visit us at www.AlpacaHeritage.com or contact Ingrid Wood at 609-261-0696.

Please submit your lama events to: editor@lamalink.com



Hummin' & Thumbin'

Have a ride? Need a ride? Contact LamaLink.com and we will list your lama hauling needs and services FREE.



WHO: Conrad Grillo,
Green Mountain Llamas
FROM: Anywhere USA
TO: Anywhere USA
WHEN: Any time
ROOM FOR: Up to 20 +/-
PHONE: (802) 236-0291

WHO: Ken West, Wild West Llamas
FROM: Anywhere USA
TO: Anywhere USA
WHEN: Any time
ROOM FOR: 20+
PHONE: 406-596-7776

Contact Us: LamaLink.com
470 Riverside Road • Kalispell, MT 59901
www.lamalink.com
advertising@lamalink.com
SEE MAIL-IN FORM BELOW

Have a ride? Need a ride?

Complete this form, return it to us, and your lama hauling needs and services will be listed absolutely FREE!

Hummin' & Thumbin' entries received by the 20th of the month will appear in the following issue of LamaLink.com.

Hummin' & Thumbin' entries will be placed online at www.lamalink.com as soon as they are received.

Mail form to: LamaLink.com,
470 Riverside Road, Kalispell, MT 59901
Phone: 406.755.5473 Fax: 406.755.8690
E-mail: advertising@lamalink.com

LOOKING FOR A RIDE

NEEDING A RIDE

FROM: _____

TO: _____

WHEN: _____

ROOM FOR: _____

WHO: _____

PHONE NO. _____

E-MAIL (Optional) _____

lamalink.com™

your connection to the lama world

LamaLink.com delivers a blend of newsworthy articles and advertising geared toward lama enthusiasts. Published in both print and online, LamaLink.com brings the latest in lama-related events, what's new and who's who in the lama world.

LamaLink.com

470 Riverside Road, Kalispell, MT 59901
Phone: 406.755.5473 • Fax: 406.755.8690

Web Site: www.lamalink.com

Order online at

www.lamalink.com/magazine-subscription.html

Subscribe today and never miss an issue.

Please contact us about advertising opportunities with lamalink.com

\$15.00 1 year subscription (12 Issues) standard mail

\$35.00/USD Canadian Subscription

\$20.00 1 year subscription mailed First Class

\$45.00/USD Foreign Subscription

Name _____

Mailing Address _____

City _____ State _____ Zip Code _____

Phone _____ E-mail Address _____

Check enclosed

MasterCard/Visa (circle one)

Credit Card # _____ Exp. Date _____

Signature _____

WCR Chirizina #24



WCR All My Kisses #83



WCR Ariat



LLL Zak



FFF Maserati



WCR Virdallia #58

Peruvian Wild Card



Cascade into Quality!

Cascade Sale 2008

May 3&4 Stevenson, WA

phone bid

#360-901-1073

Wilde
Country Rancho

www.wcrancho.com Box 568 Raymond Alberta Canada T0K-2S0 (403)752-4899

*Committed to
Excellence*



Lot 5
Renegade's
Mimosa



Lot 19
Silver's
Opera

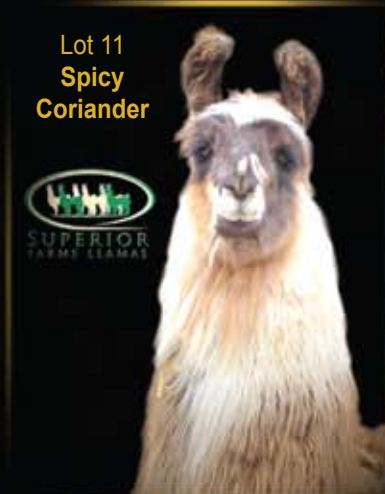
Consigned to the
Ozark Sale
May 3, 2008
See Complete Details Inside



Lot 39
Estancia
MRLE



Lot 31a
Maximum
Occupancy



Lot 11
Spicy
Coriander



Lot 49
C'est la Vie's
Deja-Vu



Lot 31b
Lanna's
Madagascar

Shawn Norman • Farm Manager
Evan Snyder • Farm Manager
5500 North Sara Road
Yukon, Ok 73099

Tel: (405) 476-0399
Fax: (405) 354-2332
superiorllamas@sbcglobal.net

lamalink.comTM

your connection to the lama world
470 Riverside Road, Kalispell MT 59901

406.755.5473

PRSR STD
U.S. POSTAGE
PAID
KALISPELL, MT
PERMIT #87