

TM
lamalink.com

your connection to the llama world

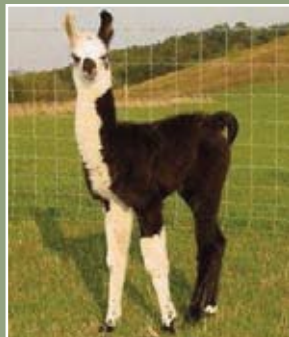
JUNE 2009

Interview with
Lynda
Carothers

Argentine
Excitement

Argentine
Llama Fiber

www.lamalink.com



ARGENTINE
LLAMA
AFICIONADOS



On-Line Sale

June 5-7, 2009

www.argentinellamas.org

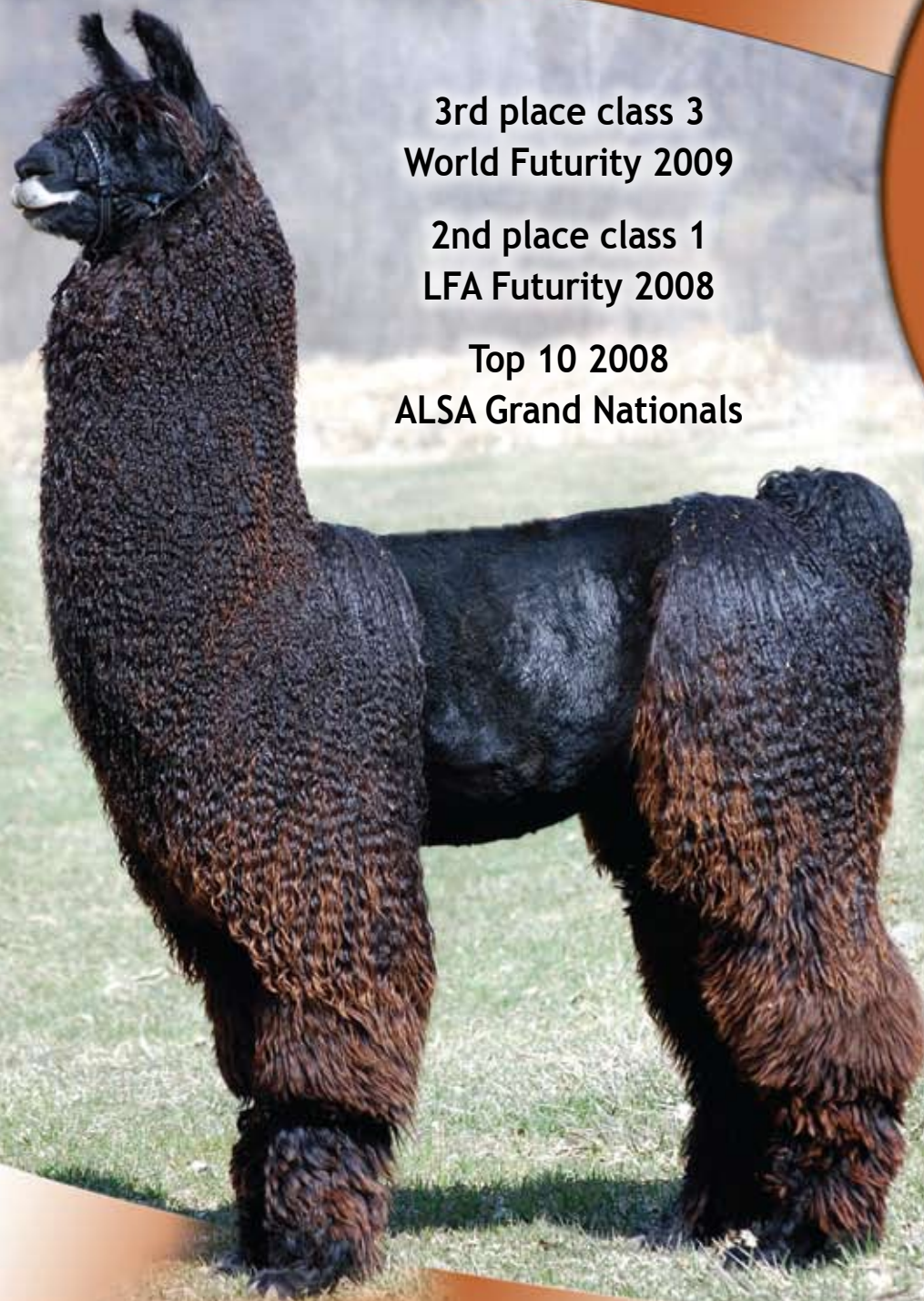
Argentine Marcel (ET)

Argentine Kobra x Argentine Pampita (ET)

3rd place class 3
World Futurity 2009

2nd place class 1
LFA Futurity 2008

Top 10 2008
ALSA Grand Nationals



Limited Breedings
Available Fall 2009.

Hacienda El Sueno

Chris and John Elbert
Springbrook, WI
715-766-3231

www.HaciendaElSueno.com

Lone Star Ranch

Sandra Reynolds
Bokchito, OK
580-745-9202

lonestarranchoktx@gmail.com

Carothers Country Farm

Lynda Carothers
Minnesota City, MN
507-689-2677

www.CarothersCountryFarm.com

On The Cover

- 6 **Argentine Llama Aficionados**
www.argentinellamas.org



Must Reads Features

- 12 **The Beginning Of The Argentine Llama In The States**
 by Seth Onsager
- 14 **Argentine Excitement In The Air**
 by Lynda Carothers
- 17 **What Can You Do With An Argentine?**
 Or Accidentally Argentine
 by Laura Harrawood
- 19 **Argentine Llama Fiber**
 From A Self-proclaimed Fiber Junkie's Viewpoint
 by Kelly Radding
- 24 **2009 Spring Celebration Sale & Futurity**
 by Natalie Langowski



14

What makes an Argentine? It is simply the country of origin. The full Argentine llama has its' entire genealogy traceable back to Argentina. Only full Argentine llamas can have the word "Argentine" as the first word in their name.

Within Every Issue

- 8 **Linking-Up**
 Interview with Lynda Carothers
 by Laura Harrawood

CANADIAN CONNECTION

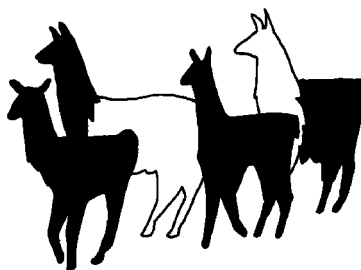
- 27 **There's No Time Like The Present**
 by Sue Wilde
-
- 28 **Where To Be**
- 29 **Classified Advertising**



19

That Argentine look; the short, triangular face, the stovepipe legs, the fiber on the face, the fiber on the legs, the fiber over the toes, the fiber, the fiber....But what does that really mean from a fiber viewpoint?

Hummin' &
Thumbin'



Tell our
advertisers
you saw them in

lamalink.com

Have a ride? Need a ride?
Contact LamaLink.com and
we will list your lama hauling
needs and services on our
website — **FREE.**

Hummin' & Thumbin'
entries will be placed
online at
www.lamalink.com

ADVERTISER INDEX

| | |
|--|--|
| Abbott's Big Sky Ranch..... pg 17 | Lone Star Ranch..... pgs 2 |
| American Miniature Llama Assoc ... pg 27 | Minnesota Minis..... pg 18 |
| Argentine Llama Aficionados..... cover, pgs 6-7 | Monastic Fleece..... pg 23 |
| Buck Hollow Llamas, Inc. pg 20 | Moonshadow Farm Llamas pg 10 |
| Carothers Country Farm..... pgs 2, 14 | Pheasant Hill Farm pg 16 |
| CityCats.Biz..... pg 27 | Pine Haven Llamas..... pgs 17, 20, 21 |
| Dark Hollow Llamas..... pg 23 | Sapaveco..... pg 21 |
| Fallen Oak Llamas..... pg 21 | Show Me State Mini Llamas pg 22 |
| Fortune Creek Llamas pg 25 | Sun Valley Llamas pg 12 |
| Fuzzy Farm, The pg 10 | Supporters of Truth Revealed..... pg 32 |
| Grand Slam Ranch pg 21 | Tai Chi Llamas pg 19 |
| Hacienda El Sueno..... pgs 2, 12 | Taylor Llamas pg 13 |
| Hard Rock Llama Co. pg 5 | Treasure State Metal Recycling pg 26 |
| Homespun Hideaway pg 10 | Tucker Woods Farm pg 25 |
| Llama Dreams pg 15 | Wild Oak Llamas pg 9 |
| Llama Futurity Association..... pg 11 | Wilde Country Rancho..... pg 31 |

Please tell our advertisers you saw them in LamaLink.com!

lamalink.comTM

your connection to the lama world

JUNE 2009

Volume 5, Issue 10

www.lamalink.com

EDITOR/PUBLISHER

Monica Tocci-Brown

editor@lamalink.com

WEB DESIGN

Beverly Storer

GRAPHIC DESIGN

Bonnie Bushman

CONTRIBUTING WRITERS

Lynda Carothers, Laura Harrawood,

Natalie Langowski, Seth Onsager,

Kelly Radding, Sue Wilde

CONTRIBUTING PHOTOGRAPHER

Dar Wassink

SUBSCRIBERS:

If the postal authorities alert us that your magazine is undeliverable, we have no further obligation unless we receive a corrected address within two years. POSTMASTER: Send address changes to LamaLink.com, 470 Riverside Road, Kalispell, MT 59901 or send via e-mail to subscriptions@lamalink.com.

LETTERS TO THE EDITOR:

Please include your name, address and phone number. Letters may be edited for clarity or space. Send mail to LamaLink.com, 470 Riverside Road, Kalispell, MT 59901. Or send e-mail to editor@lamalink.com

CONTACT US:

LamaLink.com

470 Riverside Road • Kalispell, MT 59901

406.755.5473

www.lamalink.com

editor@lamalink.com

advertising@lamalink.com • subscriptions@lamalink.com

LamaLink.com is published by New Wave Publishing, LLC. Reproduction of any portion of LamaLink.com magazine without written permission of the publisher is prohibited.

The opinions, beliefs and viewpoints expressed by the various authors and forum participants in this magazine and on the web site do not necessarily reflect the opinions, beliefs and viewpoints of LamaLink.com or its advertisers.



2009 Hard Rock Gold Rush Sale

has been postponed until June 2010



We strongly believe that the farm auction format is one that is fun and important to the llama industry. We have every intention and look forward to hosting the sale next year around the same time. It is our sincere hope that by delaying this year's sale, and beginning the promotion of next year's sale early, we can more thoroughly prepare for the kind of event the llama industry has come to expect from us. Mark this event on your calendar for 2010 and get ready for the farm sale to remember!

Please feel free to call or email with any suggestions or questions about next year's event. We hope to make it a very fun event with lots of top quality animals to choose from.

In the mean time, while the sale is canceled, the consignments can be viewed on the Auction Preview portion of our website.

www.hardrockllamaco.com

