

JUNE 2008

Interview with
Jean Pascal Petit

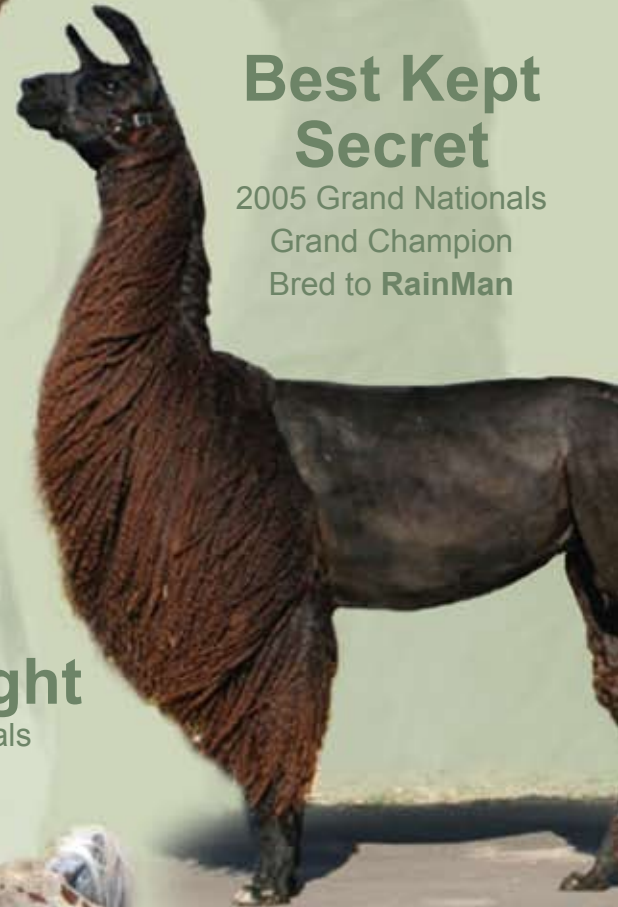
Celebrity 2008

Miniature Llama
Update



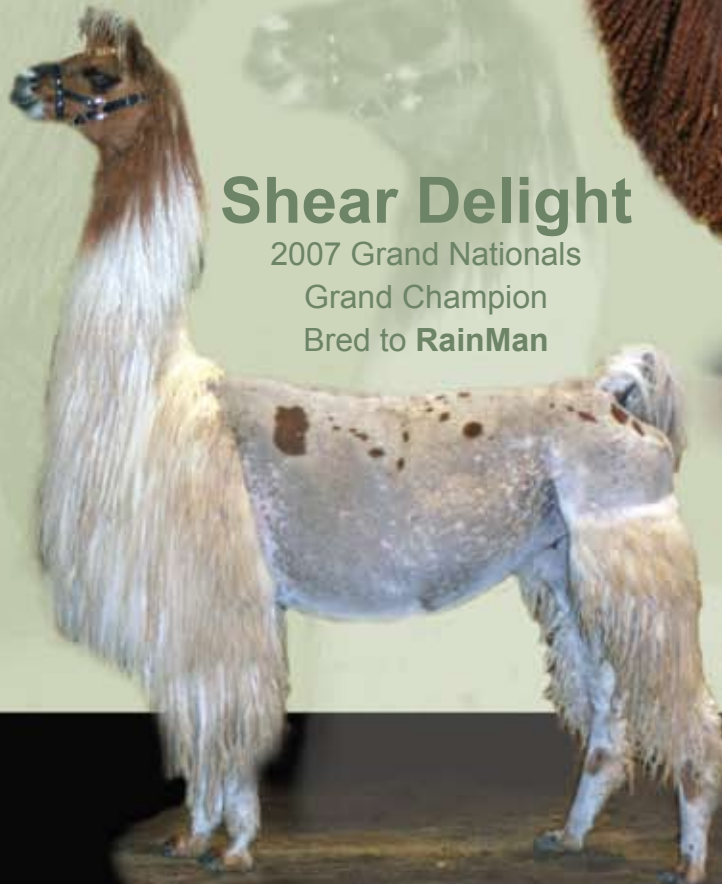
RainMan

2007 Grand Nationals
Reserve Champion
Get of Sire



Best Kept Secret

2005 Grand Nationals
Grand Champion
Bred to RainMan



Shear Delight

2007 Grand Nationals
Grand Champion
Bred to RainMan

WE HIT A *Home Run...*

Thank you Shawn Norman for putting on the innovative GRAND SLAM!



MSF Strike Gold

Solid Rock's Trademark x East Fork Goldilocks
1st, 2nd & 2 Res. CH in Grand Slam
1st class #2 Celebrity World Futurity
(Only class winner to receive 1st from all 3 judges)



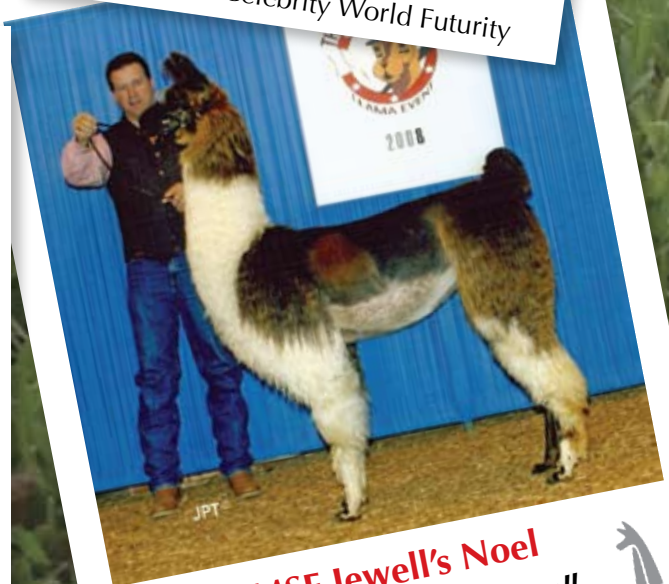
MSF Colt's Blue

Tuna Catcher x MSF Blue Sapphire
2 seconds Grand Slam
3rd class #3 Celebrity World Futurity



Tuna Catcher Get of Sire

MSF Colt's Blue, MSF Jewell's Noel & MSF Ironman
2 first Grand Slam • First Celebrity World Futurity
At 12 years old Tuna Catcher consistently continues to sire winners!



MSF Jewell's Noel

Tuna Catcher x Crown Jewell
2 first & 2 Champions Grand Slam
3rd class #2 Celebrity World Futurity
*She sells in the LFA Sale



*Our first "Silvermoon Tresor" crias have arrived this spring.
Please stop by the farm and check them out!*

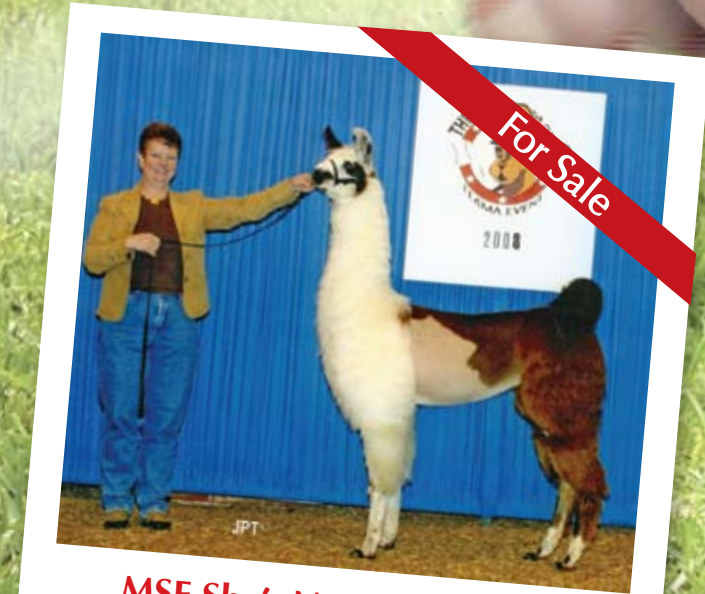
...IN OKLAHOMA CITY



MSF Rip Off

Solid Rock's Trademark x East Fork Goldilocks

Full brother to MSF Strike Gold
1st HW juv. male 06' Grand National Show
We have bred Rip Off to many
top females due this fall.
For Sale - Will consider 1/2 interest



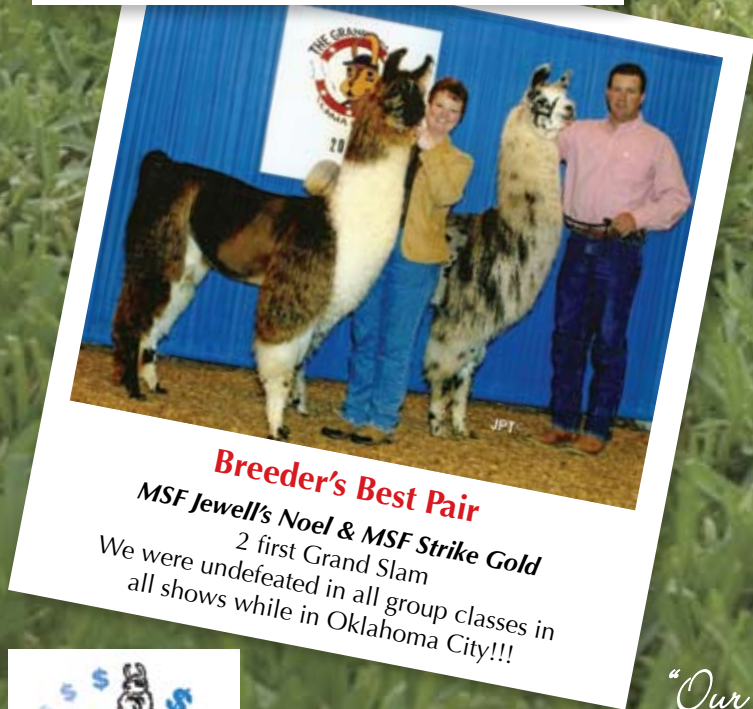
MSF She's No Compromise

No Compromise On The Ridge x Macha
2 first Grand Slam
(was not shown in Celebrity World Futurity)
For Sale - Please contact us for details



MSF Ironman

Tuna Catcher x MSF Xerox
1st, 3rd and Res. CH Grand Slam
8th class #3 Celebrity World Futurity
For Sale - Please contact us for more information



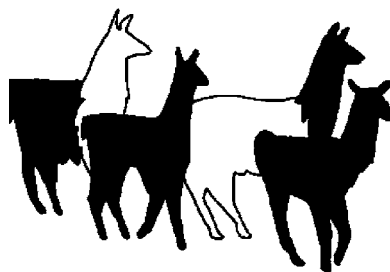
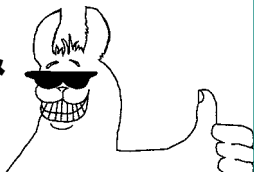
Breeder's Best Pair

MSF Jewell's Noel & MSF Strike Gold
2 first Grand Slam
We were undefeated in all group classes in
all shows while in Oklahoma City!!!

*"Our name may be common
but our llamas are not!"*



Hummin' &
Thumbin'



Have a ride? Need a ride?
Contact LamaLink.com and
we will list your lama hauling
needs and services on our
website — **FREE.**

Hummin' & Thumbin'
entries will be placed
online at
www.lamalink.com

Tell our
advertisers
you saw them in

lamalink.com

lamalink.comTM
your connection to the lama world

JUNE 2008
Volume 4, Issue 10
www.lamalink.com

EDITOR/PUBLISHER
Monica Tocci-Brown
editor@lamalink.com

WEB DESIGN
Beverly Storer

GRAPHIC DESIGN
Bonnie Bushman

CONTRIBUTING WRITERS
Laura Harrawood, Natalie Langowski,
Marilyn Nenni, Julie Sines, Justine Rennecker,
Robert J. Van Saun, DVM, MS, PhD, Sue Wilde

CONTRIBUTING PHOTOGRAPHERS
Sue Wilde, Susan Gray, April Pope
Alaine Byers-Holzhauser, Pat Bell

SUBSCRIBERS:

If the postal authorities alert us that your magazine is undeliverable, we have no further obligation unless we receive a corrected address within two years. POSTMASTER: Send address changes to LamaLink.com, 470 Riverside Road, Kalispell, MT 59901 or send via e-mail to subscriptions@lamalink.com.

LETTERS TO THE EDITOR:

Please include your name, address and phone number. Letters may be edited for clarity or space. Send mail to LamaLink.com, 470 Riverside Road, Kalispell, MT 59901. Or send e-mail to editor@lamalink.com

CONTACT US:

LamaLink.com
470 Riverside Road • Kalispell, MT 59901
406.755.5473
www.lamalink.com
editor@lamalink.com
advertising@lamalink.com • subscriptions@lamalink.com

LamaLink.com is published by New Wave Publishing, LLC. Reproduction of any portion of LamaLink.com magazine without written permission of the publisher is prohibited.

The opinions, beliefs and viewpoints expressed by the various authors and forum participants in this magazine and on the web site do not necessarily reflect the opinions, beliefs and viewpoints of LamaLink.com or its advertisers.

ADVERTISER INDEX

Alpaca Breeders Of The Rockies pg 26	Luminary Minis pg 17
American Miniature Llama Assoc pg 20	M & W Llamas & Etcetera pg 22
Argentine Llamas Aficianados pg 12	Mark Smith Farms pgs 2 & 3
Blooming Valley Mini Llamas pg 20	Moonshadow Farm Llamas pg 30
Bluestem Acres pg 12	Morning Glory Minis of Indiana pg 20
Breezy Acres Mini Llamas pg 16	NorthWind Farm cover, pgs 18 & 19
Buckhollow Llamas pg 30	Paco-Vicuñas pg 11
Canadian Mystic Meadows pg 14	Rivers Edge Ranch pg 17
Doubleback Farm pg 17	Roxywood Llamas pg 14
Flightless Farms pg 13	Sapaveco Ranches pg 11
Freestate Llamas pg 22	Shagbark Ridge Llamas pg 29
Gemini Mini Llamas pg 17	Show Me State Mini Llamas pg 20
Hinterland pg 9	Superior Farms Llamas pg 36
Integrity Llama Farm pg 21	TuckerWoods Farm pg 16
ILR Lamaribbean II pg 23	Wild Oak Llamas pg 7
LANA Expo pg 25	Wilde Country Rancho pg 35
Llama Futurity Association pg 15	Yocom - McColl pg 24
Llucky Charm Mini Farm pg 17	

Please tell our advertisers you saw them in LamaLink.com!



On The Cover

JUNE 2008

18 & 19 **NorthWind Farm**
11971 S. Hildebrandt
Sawyer, MI 49125
269.426.3334
mail@northwindllamas.com
www.northwindllamas.com



11 This is the weekend to be a part of the llama industry, fun and games! The Grand Slam Show this year took on a new flair awarding super prize money and a custom trailer.

Must Reads Features

- 11 **Celebrity 2008**
Let's Play Ball and Rock & Roll
by **Sue Wilde**
- 14 **Thank You Llama community**
by **Natalie Langowski**
- 16 **The Virginia Classic Show Review**
by **Julie Sines**
- 22 **Miniature Llama Events Calendar**
- 24 **Mega Mini Meeting**
by **Laura Harwood**
- 25 **Lamas Hate Plucking!**
Part 2 of 2
by **Mary Pendergast**
- 28 **Copper Nutrition In Camelids**
Part II
by **Robert J. Van Saun, DVM, MS, PhD**

Within Every Issue

- 6 **Linking-Up**
Interview with Jean Pascal Petit
by **Sue Wilde**

- CANADIAN CONNECTION
- 27 **Bone Collector**
by **Sue Wilde**

- 32 **The Show To Be At**
by **Justin Rennecker**
- 30 **Kid's Korner**
- 33 **Where To Be**
- 34 **Classified Advertising**

25

As the shearing season is sneaking up again I can't help but think of all the nice llama people out there trying to keep their animals comfortable and healthy by taking the fiber off. I also think of all the nice llama people cursing like sailors and fighting with their equipment.

