

TM
lamalink.com

your connection to the lama world

JULY 2008

Interview with
Justin Timm

ILR Incentive
Fund

Wanted:
Llama
Babysitter

www.lamalink.com

Celebrating Life and Llamas



Please join us!

WALKABOUT VI
PREVIEW JULY 25TH • SALE 26TH, 2008



PLAN NOW TO ATTEND

LFA WORLD CHAMPIONSHIP SHOW & SALE

SEPTEMBER 19-21, 2008 • CEDAR RAPIDS, IOWA

Complete Event Information
And Forms Go To

[www.thelfa.org!](http://www.thelfa.org)

Schedule of Events

Thursday 9/18/08

8:00 am Arrival and stalling of animals, setup displays vendor and sponsor areas

Friday 9/19/08

7:00 am Fresh Pastries and complimentary coffee
continued arrival and set up
7:30 am ALSA exhibitor and Judges meeting
8:00 am "Fall Harvest" Single point ALSA show begins
9:00 am - 4:00 pm Llama Fiber Demonstrations
3:00 pm Futurity Jackpot Obstacle Classes —
Geriatric class followed by the Open class

Evening of Camaraderie

6:00 pm Cocktails and Hors d'oeuvres served at the Equestrian Center

Saturday 9/20/08

7:00 am Fresh Pastries and complimentary coffee
8:00 am Display and Vendor areas open
9:00 am - 4:00 pm Llama Fiber Demonstrations
9:00 am Amateur Futurity begins with the male class – Show arena
10:30 am Jackpot Non Breeder Futurity
11:15 am to 12:00 pm Bloody Mary's and Tangy Mimosas served as the individual
introduction of Sale Animal is presented across the
RED CARPET
12:00 pm to 12:45 pm Hands on inspection of sale animals
12:45 pm to 1:45 pm Lunch is Served
1:45 pm to 2:00 pm LFA Annual Membership Meeting
2:00 pm Llama Futurity Association Sale begins
Snacks and beverages will be served during the auction

Sunday 9/21/08

7:00 am Fresh Pastries and complimentary coffee
8:00 am Futurity Classes begin — starting with the Suri Male
Llama Class
11:30 am to 2:00 pm Lunch will be available on a cash basis
3:30 pm At the completion of all Futurity classes, announcement
of ALL Futurity Class Top 10 and Class Champions and
presentation of the awards

2008 LFA EVENT SPONSORS

DIAMOND SPONSORS...

Ken & Celia Austin
Raindance Ranch
Newberg, OR

Mike & Wendy Gerken
Hard Rock Llama Company
Ada, OH

John & Debra McDougall
Westerham Farm & Studio
Montpelier, VA

Malcolm & Carol Ann Tallmon
CarolLlama Farms
Weatherford, TX

Keith & Patti Wattigney
P.K. Mini's
Belle Chase, LA

Lew & Jennifer McGinnis
Superior Farms Llamas
Oklahoma City, OK

GOLD LEADERSHIP SPONSORS...

Gordon & Pam Jensen
Hid - n - Hills Llamas
Cochrane, WI

Doug & Kamala Overman
Overman Llamas
Otterbein, IN

GRAND ENTREPRENEUR SPONSORS...

Tom & Barb Parsons
Animal Acres Llamas
Douseman, WI

Dennis & Tracey McGinnis
Bear Korner Llamas
Warrens, WI

SUPPORTING SPONSORS...

Kurt & Dr. Kristi Brown
The Brownderosa
Sparta, WI

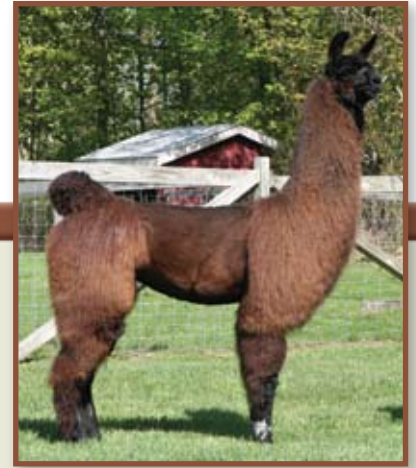
The Association by the People for the People



BKL Amazing Day (f)
Consignment of
Tracey & Dennis McGinnis



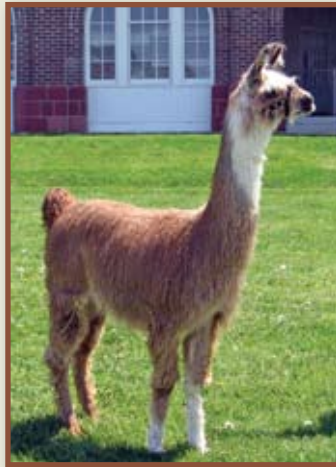
CTW Starlite (f)
Consignment of Larry Kisner



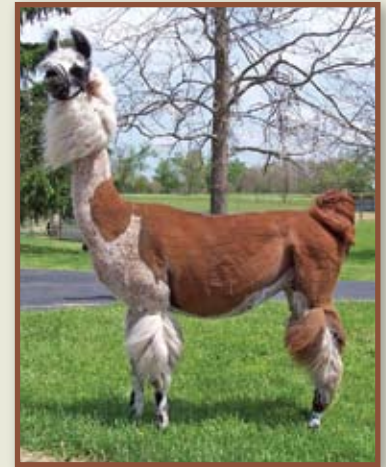
MHF Sirius Style (f)
Consignment of Phil Feiner
& Larry Rothenberg



ME Freyja (f)
Consignment of
Margret & Ed Bender



Hightower (m)
Consignment of
Lew & Jennifer McGinnis



Courtney (f)
Consignment of
Chris & Venesa Carter

**BE PART OF
THE FUN!**

Request a catalog today at
www.thelfa.org

Thank you to those who have already agreed to sponsor! Sponsorship opportunities are still available. Contact Phil Feiner at philip@pfeiner.com



BKL Silver Mistress (f)
Consignment of
Tracey & Dennis McGinnis

ALSA Fall Harvest Show Judge
Penny Davidson

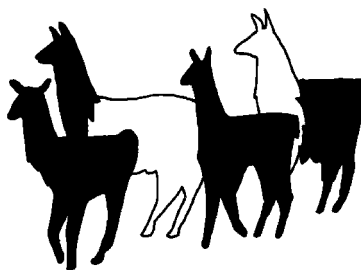
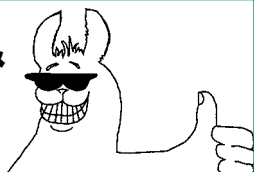
World Futurity Show Judges

- Beth Myers - OH
- Danielle Wagoner - CA
- Lora Crawford - CA

Show Entry Deadline:
Entries received prior to
08/18/2008 will be \$250.00.
After 08/18/2008 will be \$275.00.
Entries will be accepted until after
the sale. For entry forms go to

www.theLFA.org

Hummin' &
Thumbin'



Tell our
advertisers
you saw them in

lamalink.com

Have a ride? Need a ride?
Contact LamaLink.com and
we will list your lama hauling
needs and services on our
website — **FREE.**

Hummin' & Thumbin'
entries will be placed
online at
www.lamalink.com

lamalink.comTM
your connection to the lama world

JULY 2008

Volume 4, Issue 11
www.lamalink.com

EDITOR/PUBLISHER

Monica Tocci-Brown
editor@lamalink.com

WEB DESIGN

Beverly Storer

GRAPHIC DESIGN

Bonnie Bushman

CONTRIBUTING WRITERS

Lynda Carothers, Tami Lash, Julie Sines,
Cathy Spalding, Sue Wilde

CONTRIBUTING PHOTOGRAPHERS

Carol Reif

SUBSCRIBERS:

If the postal authorities alert us that your magazine is undeliverable, we have no further obligation unless we receive a corrected address within two years. POSTMASTER: Send address changes to LamaLink.com, 470 Riverside Road, Kalispell, MT 59901 or send via e-mail to subscriptions@lamalink.com.

LETTERS TO THE EDITOR:

Please include your name, address and phone number. Letters may be edited for clarity or space. Send mail to LamaLink.com, 470 Riverside Road, Kalispell, MT 59901. Or send e-mail to editor@lamalink.com

CONTACT US:

LamaLink.com
470 Riverside Road • Kalispell, MT 59901
406.755.5473
www.lamalink.com
editor@lamalink.com
advertising@lamalink.com • subscriptions@lamalink.com

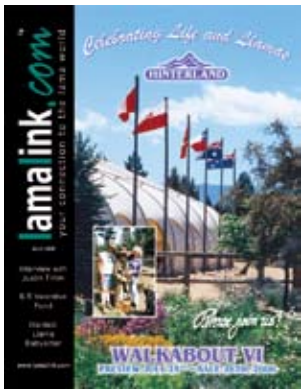
LamaLink.com is published by New Wave Publishing, LLC. Reproduction of any portion of LamaLink.com magazine without written permission of the publisher is prohibited.

The opinions, beliefs and viewpoints expressed by the various authors and forum participants in this magazine and on the web site do not necessarily reflect the opinions, beliefs and viewpoints of LamaLink.com or its advertisers.

ADVERTISER INDEX

Alpaca Breeders Of The Rockies pg 23	Llamarage..... pg 21
American Miniature Llama Assoc pg 16	Moonshadow Farm Llamas pg 14
Argentine Llamas Aficianados pg 20	Morning Glory Minis of Indiana..... pg 16
Blooming Valley Mini Llamas..... pg 20	Northwest Llamas, Inc. pg 15
Buckhollow Llamas..... pg 24	Paco-Vicuñas pg 15
Canadian Mystic Meadows..... pg 21	Posey Thisisit Llamas..... pg 13
Carothers Country Farm..... pg 25	Rain Dance Ranch pg 11
CityCats.biz pg 23	Rancho Linda Vista pg 21
East Fork Ranch..... pg 18	Rare Breeds Journal..... pg 20
Freestate Llamas..... pg 14	Roxywood Llamas pg 24
Gemini Mini Llamas pg 19	Sapaveco Ranches pg 19
Gentle Spirit Llamas pg 22	Show Me State Mini Llamas pg 27
Hinterlandcover, pgs 6 & 7	Superior Farms Llamas pg 32
ILR Lamaribbean II..... pg 17	Wilde Country Rancho..... pg 31
LANA Expo pg 10	Yocom - McColl pg 18
Llama Futurity Association..... pgs 2 & 3	

Please tell our advertisers you saw them in LamaLink.com!



On The Cover

JULY 2008

6 **Hinterland WALKABOUT VI**
www.hinterlandllamas.com



13

After an evening of stormy weather the rest of the weekend turned out to be a great time. This year the Ozark Llama Classic Sale & Show was moved to a new facility in Sedalia Missouri. This venue turned out to be just fabulous with all the amenities one could want for a show and sale facility!

Must Reads Features

13 **Ozark Llama Classic Show & Sale**

14 **Cascade Llama Sale**
by Sue Wilde

16 **ILR Incentive Fund**
How does the ILR Incentive Fund (IF) work?
by Tami Lash

20 **Wanted: Llama Babysitter**
The Importance of Who You Leave Your Llamas With
by Julie Sines

22 **Martin Chambi 1891 - 1973**
One Of The World's Greatest Photographic Pioneers
by Cathy Spalding

25 **Seamless Felting A Purse**
by Lynda Carothers

28 **Millennium Magic**

14

Stevenson, Washington was an idyllic, lovely setting for a sale of very lovely llamas. Once you paid your dollar toll and crossed the Bridge of the Gods you were in the land of the llama gods.



20

Next time you go on vacation, look for that extra special llama babysitter. You never know what might happen while you are gone!



Within Every Issue

8 **Linking-Up**
Interview with Justin Timm
by Sue Wilde

CANADIAN CONNECTION

27 **Who's Buying What?**
by Sue Wilde

29 **Where To Be**

30 **Classified Advertising**