

NORTHWEST LLAMAS, INC

Northwest Llamas Inc has been in business for over 25 years — showing and raising fine quality llamas. We strive for excellence in our breeding program to ensure well rounded dispositions, correctness, fiber and presence.



Lot 21

NORTHWEST MARTINI FROST (F)

WWLC Peruvín Mercury Rising X Sunwood Amanda

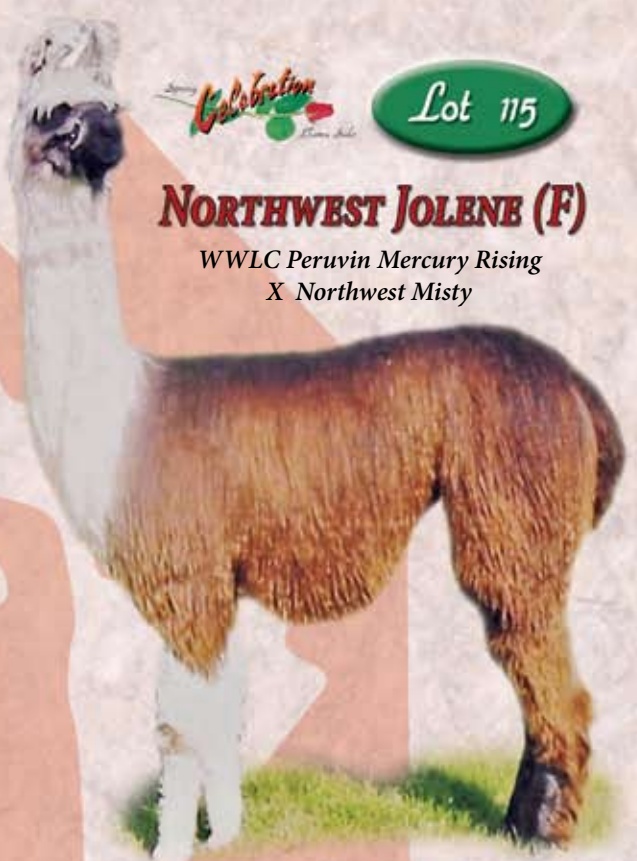
Full Sister To, Naomi, Who Was One Of The Top Best Sellers In Celebrity Sales In 2008



Lot 115

NORTHWEST JOLENE (F)

WWLC Peruvín Mercury Rising
X Northwest Misty



Lot 52

NORTHWEST MAVERICK (M)

WWW Peruvín Mercury Rising
X SF Margarita
Future Top Herd Sire



Lot 78

S.F. MARGARITA

Bred Female • STL Ikon X S.F. Senorita
Big! Big! Margarita Stands Over 6', 6" Tall.
Her 1st Cria Northwest Maverick In This Sale. She Is Bred To SSRMT Leonardo, Son Of The Legendary Chileno Cachete.



Jim Klone • 40-4410-52 Ave. • Westaskiwin, AB, Canada Ph:(780) 352-4626 • Fax: (780) 352-4649 • Cell: (780) 361-7887

nwillamas@telus.net

Llama Work Station



Also Available:
Stalling Mats
Incredible Feed Crates
Galvanized and
Aluminum gate panels

**2009 Price is
\$916 plus S&H**

The Best Chute at the Best Price.

Discount breeding coupon accompanies the purchase

- Designed for the safe and easy vetting of your llama
- 2 inch diameter steel and double powder coated
- Side stabilizers prevent tipping over
- Plenty of eyelets for tying, cross tying hanging hay bag, or belly bands
- Horizontal/vertical bars easily repositioned while animal is in chute
- Heavy expanded metal slip resistant flooring
- Folds down to a compact unit for transportation or storage
- Completely disassembles for easier handling

Call or email to reserve one or for more information:

610 582-9051 or carol@buckhollowllamas.com

Hidden Oaks Llama Ranch

Consigned to
Spring Celebration
Lot #53

HOLR Angel's Surina
2008 "Suri" Female
(GC's Inca Legend x HOLR Kayla's Snow Angel)
(x The Canadian)

The Tallmon Family • Wil, Sherri, Kayla & Logan
Hidden Oaks Llama Ranch • Estacada, Oregon
503.630.5173 • hiddenoakslamaranch@msn.com
www.hiddenoakslamaranch.com

...Continued from page 20

and even then you have to be prepared if the vet can't get there in time.

I guess I can't be prosecuted for this so I'll admit that I let a young cria get dangerously thin because it's mother didn't have enough milk. An intensely cold night came and although I checked the llamas several times through the night, in the morning my one month old cria was cold, stiff, and motionless. When I carried her little body to the hot tub I could feel her exhaled breath cold on my neck. I had thought this cria was getting enough milk but it absolutely was **not!** The cria's positioning under her mom, slurping sounds, sucking noises and all manner of nursing deceit sure pulled the wool over my eyes. It seemed to be a conspiracy cooked up between mom and baby to make me look bad.

NOTE TO SELF: Check udders to make SURE there is milk. Also, weighing llamas is the way to know for sure if that milk is doing any good.

Here in Missouri we get hit with quite a few weather pranks. We might have had weeks of cold or freezing temperatures and then one day the thermometer soars to a sultry 55 degrees. This blissful gift turns normal people in to savages. People peel off clothes, eat lunch outside, take walks and order from seed catalogues. To a baby llama, though, fresh out of a warm 100 degree uterus, 55 degrees and a frozen earth is an icy insult that can ruin it's day. If you ruin a cria's day, yours pretty much stinks as well. Premature or dysmature llamas are especially susceptible to hypothermia. Their little brains need some time to practice temperature regulation.... they just aren't that good at it yet.

We have to be aware that digital thermometers, while attractive and pretty darn handy, need to be used correctly. They run on batteries so need to be checked occasionally. Also one needs to do a little thermometer drill prior to the actual emergency temperature taking event. If you don't get a reading on a digital thermometer, it doesn't necessarily mean it

is broken. It could mean your llama's temp is critically low... life threateningly low as a matter of fact. Post a list of normal llama (cria and adult) temperatures, pulse and respiration. Emergencies make nitwits out of many of us and thinking clearly is not as easy as it seems it should be. So yeah, you can stick your finger in a cria's mouth to see if it's cold but by that time, well... **it's cold!** The only way to truly know how warm or cold a llama is, is to take it's temperature.

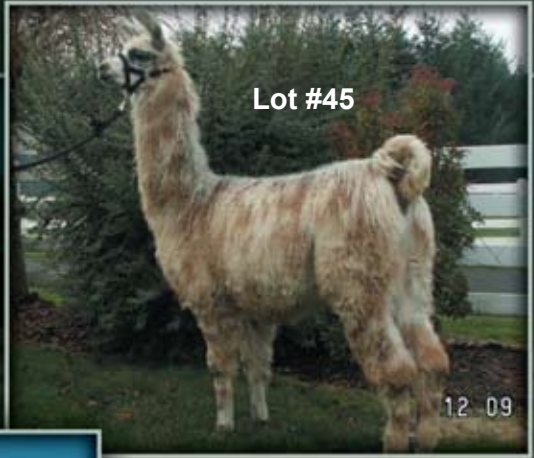
When warming up a llama it is extremely important to warm it up slowly. Check temperatures frequently when the llamas temp is approaching normal. A llama that became hypothermic because it was sick in the first place, may very well have a virus or infection that will cause it's temp to go to the other extreme and the llama will end up with a fever.

Mysterious things go on in a crias little body and warming up baby may not be the end of the problems. They may likely be dehydrated, hypoglycemic, have kidney damage, heart damage or a whole

Rock'n R Llamas



Celebration



Lot #45

Smokin Liza Jane (F)

FFF Smokin Ringos x Chilean Rumba

Appaloosa-Chilean

ILR #274998

DOB: 6/21/08

Rock'n R's Carleta (F)

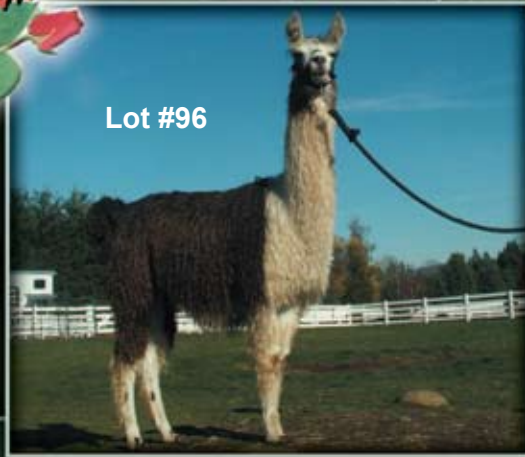
HCLA Bolivian Sajama x
Chilean Classic Cameo Gal

Suri Paint

ILR #272079

DOB: 9/21/07

Lot #96



Rock'n R Llamas

14104 NE 76th Ave.
Vancouver, WA 98662
(360)573.1234

sandyrale@comcast.net

Larry & Sandy Raley

www.rocknrlamas.com

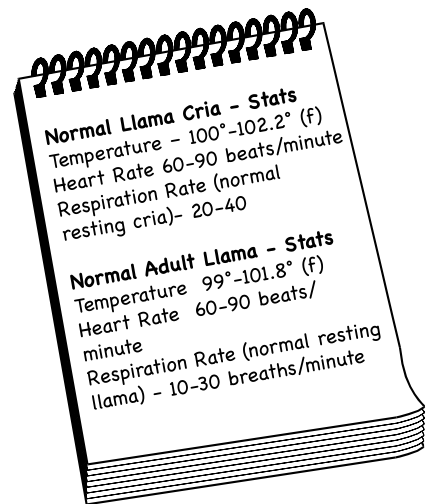
list of other problems. Keeping a close eye on your little patient for a couple of days after the emergency is a must. Crias kept in the house are more easily monitored for activity, elimination and frequent temperatures. I'd rather put a diaper on my cria and watch it for a few days in the house than worry about it outside in a chilly barn.

Remember, preventing hypothermia by doing monthly body condition scores, timely shearing, good nutrition, good shelter, and available water in a heated

bucket are good practices. One of the worst feelings is to find a stiff, cold cria on your morning barn rounds. A feeling worse than the afore mentioned feeling is knowing that there was something you could have done to prevent it.

Albert Einstein said, "Intellectuals fix problems. Geniuses prevent them".

While doing research for this article it seemed that all roads (even the one lane bumpy ones with grass growing down the middle) led me to Dr. David Anderson DVM, MS, DACVS. Thank you doctor.



MOONSHADOW FARM LLAMAS

Discover the wonder of llamas... bring peace and joy into your life.



Heidi Heuser
and
Jim Foster
Vermontville, MI
517 852 0544

www.moonshadowllamas.com
hh@moonshadowllamas.com

Freestate Llamas

Breeding, Show & Sales

Marian Bragg
Owner

freestatellamas@comcast.net
540.729.6570
Amissville, VA



www.ILOVESPT.com

WHERE TO BE

- **March 21 & 22, 2009 3rd Annual March Magic Level III Double Casual Llama Show.**
Relax ~ Fun ~ Casual ~ No Groom ~ Low Entry Fees ~ Great Awards. Hosted by Llama Association of Southern California (LASC) Location: Antelope Valley Fairgrounds, Lancaster California. We will be offering all 4 wool divisions, driving, novice & advanced performance. All 3 youth age groups. Walking and shorn fleece will be a single show. March Magic had to be moved this year from the Fairplex in Pomona due to fairgrounds construction. This year's new facility is fully covered. No Rain Worries. Our show this year will be in conjunction with a Home and Garden Show. Show judges: Mark Smith ~ Senior Level Judge, Mary Jo Miller ~ Senior Level Judge Margaret Ricci ~ Level Judge Contact: Ken Sutton 760-240-6878 or SewSew25@aol.com or Tracey Wallace 909-792-3711 or DandT22@aol.com
- **April 3-5, 2009 - Spring Celebration Llama Sale, Heritage Place, Oklahoma City, OK.**
Tom & Nancy Simmons and Tim & Teresa Vincent have turned over the lead rope to Dan and Marilyn Milton after 20 years of putting on the Spring Celebration Llama Sale. 2009 will again see Shawn Norman's Grand Slam llama show on Friday, the preview and sale will be on Saturday and the World Futurity on Sunday. Look for some new and exciting additions to the weekend's events. It is time to look over your herd and select your best for the grand slam show, sale, futurity and herd sire row. Contact Dan or Marilyn Milton at dmmilton@charter.net or 541-899-8097 for more information on the 2009 Spring Celebration Llama Sale.
- **April 11, 2009 Showmanship and Performance Clinic**
Llama Adventures, near Spring Green is hosting this hands on clinic taught by Pam Jensen. Information will be posted on the ORGLE website event section by December 30th. contact: Edie Benusa at 608-206-0874 bbenusa@merr.com
- **April 17-19, 2009 Central Kentucky Llama & Alpaca Show & Expo.**
ALSA sanctioned show held at the Central Kentucky Ag/Expo Center in Liberty, Kentucky will have vendors, Industry information booths, "show cut" shearing available for \$15 an animal, walking fiber classes for llamas & alpacas and free farm information display areas adjoining the arena on a "first come basis". Exhibitors are encouraged to market their animals, stud services and farm products at the event and KLAA will be advertising the show & expo statewide to bring in spectators. Other events will be fiber classes, photo and poster contests, silent auction, "ask the vet" session on Sunday and "ask your fiber questions" on Saturday with our fiber judge. Show superintendent, Helen Farley, 865-922-5844, farley42@tds.net. Halter judge, Debbie Shellabarger, fiber judge, Susie Smithers. For free vendor spaces contact, Charlotte Beaudin, 502-857-9100, dbeaudin14@hotmail.com
- **April 18, 2009 Beginning Driving**
Llama Adventures, near Spring Green is hosting this hands on clinic taught by Dan Whittaker. Information will be posted on the ORGLE website event section by December 30th. contact: Edie Benusa at 608-206-0874 bbenusa@merr.com
- **April 18 & 19, 2009 "A Llama Affaire"**
presented by Southwest WA. Llama Association . This is a double point ILR Show Same great location: Cowlitz County Fairgrounds, Longview, WA. Judges: Terry Duespohl & Beth Myers Contact Persons: Kirk or Peggy Gresham email llamacollection@msn.com (360) 896-0226
- **April 19, 2009 6th Annual Alpaca Heritage Budget Caper Halter Show**
ABC Show is a one-day Level I halter show that caters to newer breeders with little or no previous show experience. We'll help you learn the ropes in a friendly, low-stress atmosphere that emphasizes good sportsmanship as well as bio-security. 4-H'ers are especially welcome to participate in our Youth and 4-H classes. Show judge is David Friedman. We only take 99 alpacas so be sure to sign-up early! Show will be held at the Hunterdon County Fairgrounds in Ringoes NJ. For additional information, please call Show Superintendent Ingrid Wood at 609-261-0696 or visit us at www.AlpacaHeritage.com.
- **April 24-25, 2009 Cascade Llama Sale III Skamania Fairgrounds, Stevenson Washington**
Only 45 Miles East of the Portland International Airport. Join us for 2 days of FUN, Friends, and Quality llamas. We have the cure for the Wintertime Blues: Springtime of the Columbia! Contact: Jacob Mumford (360) 901-1073 cascadelllamasale@aol.com www.llamaalpacauction.com
- **April 25-26, 2009 Buck Hollow Llamas, Inc. Open Barn.**
Come see our line up of studs and breeding program, learn about llamas, visit with vendors, and walk our sale animals. A fun outing. Contact Carol at 610 582-9051 or carol@buckhollowllamas.com
- **May 2 & 3, 2009 Badgerland Sweepstakes and ALSA show**
Jefferson County Fair Grounds, Jefferson, WI Largest LFA sponsored Futurity in the Midwest and Level II ALSA show. Contact: Barb Parsons for more information theparsons@prodigy.net
- **May 16-17, 2009 Indy Open Llama Show - Double Show Noblesville, IN**
Indy Open 400 & Indy Open 500 All halter, performance, & youth classes offered. Fun Friday night get-together and complimentary "Exhibitor Thank-You" breakfast buffet served at exhibitor meeting on Saturday morning. Fun show, easy in/easy out, cash premiums, and ribbons. Information at www.shagbarkridge.com/indy.html
- **May 2-3, 2009 The 7th Annual Llamas And More Association**
will be holding a double point show at the Churchill County Fairgrounds. This is a no groom show and this year we will be holding a Walking Fleece and Shorn Fleece single show. Judges: Wally Baker for the Gold Show, Nikki Kuklenski for the Silver Show and Maryan Baker for the Garnet Fleece Show. See website www.lamandmore.com or Les Flynn 775-424-1217 for entry forms.
- **May 2-3, 2009 Millennium Magic Open Double Llama Show Breeder's Futurity**
Saturday evening fellowship dinner Come on out to see what all of the fun is about! Lenawee County Fairgrounds, Adrian, MI Show contact: Tami Lash (517) 467-2709 Uniqueanimal@aol.com. Show forms: www.LashsUniqueAnimals.com
- **May 9-10, 2009-The 15th Annual Llama Magic, Lake Elmo, MN**
Held at the Washington County Fairgrounds, this private treaty sale offers llamas and alpacas for sale on Mother's Day weekend. A special llama training clinic for adults and youth will be held Saturday by Mallon protege Marc Page of Massachusetts. On Sunday, a fun llama/alpaca performance show for youth will be held with emphasis on those in 4-H and FFA. There will also be a fleece contest, demonstrations and a wide array of vendors. Contact Sheila Fugina at bsfugina@pressenter.com or 715-246-5837, or visit www.llamamagic.com.
- **May 16, 2009 Techniques for Dyeing Skeins and Roving.**
Llama Adventures, near Spring Green is hosting this class taught by Vanessa Kessler. Information will be posted on the ORGLE website event section by December 30th. contact: Edie Benusa at 608-206-0874 bbenusa@merr.com
- **June 6, 2009 Beginning Wet Felting**
Llama Adventures, near Spring Green is hosting this class taught by Jarka Sobiskova. Information will be posted on the ORGLE website event section by December 30th. contact: Edie Benusa at 608-206-0874 bbenusa@merr.com
- **June 6-7, 2009 Traverse City, MI**
The first annual Northwestern Michigan Llama and Fiber Open Show a wonderful new opportunity for llama enthusiasts and an educational experience for those not yet knowing the joys of owning one of these exceptional animals. Judge is Ray Howard for both halter and performance, and Joy Bishop-Forshey for fleece (walking, shorn, and finished classes). Information and forms for the show are available at our website www.fehrenbachfarms.com. Call Denise with any questions at 231-590-8549.

Please submit your lama events to: editor@lamalink.com



